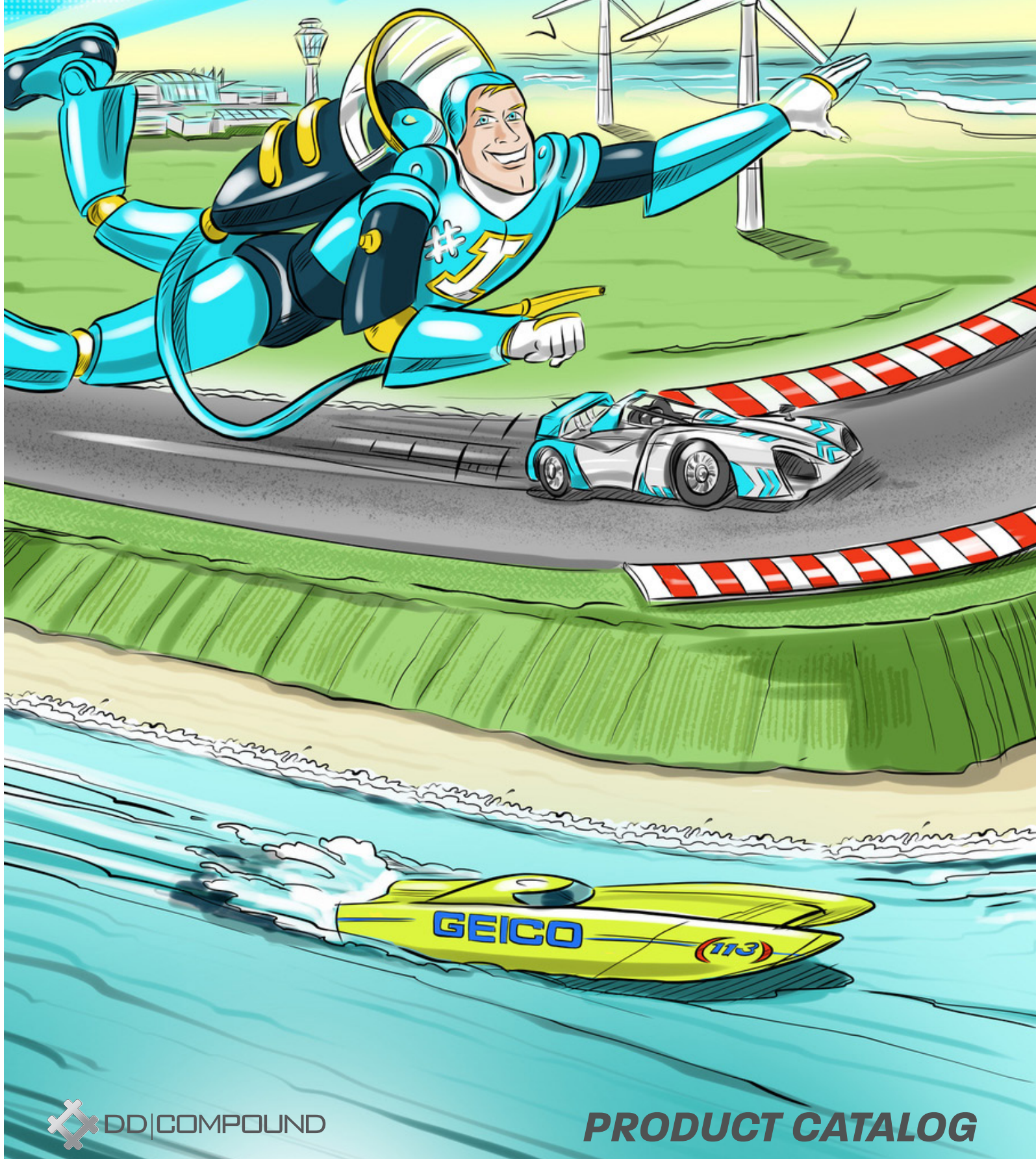
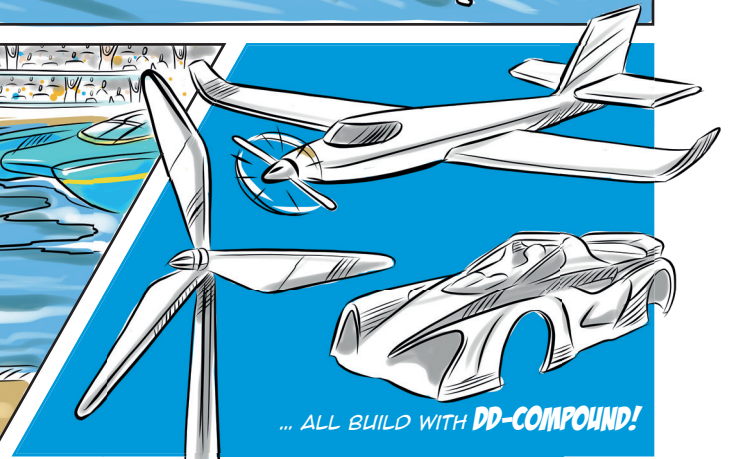
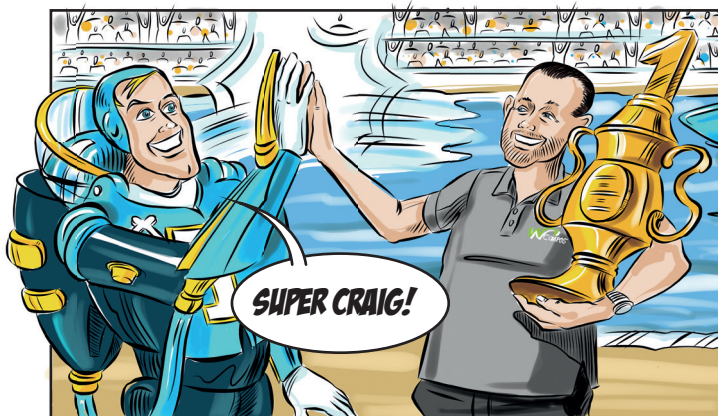
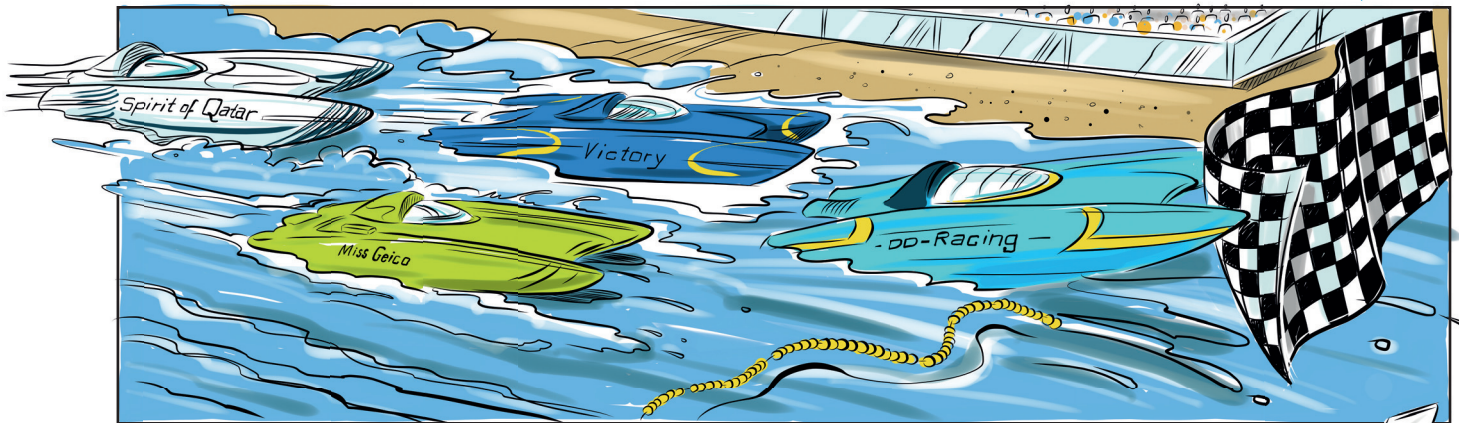
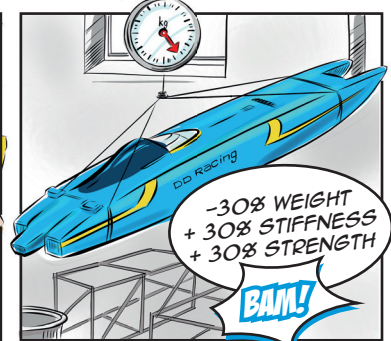
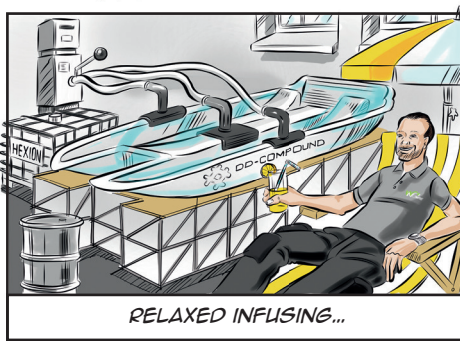
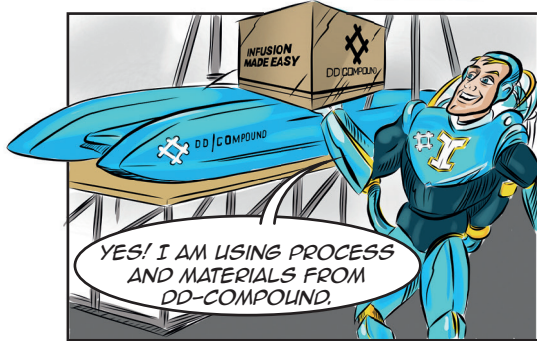
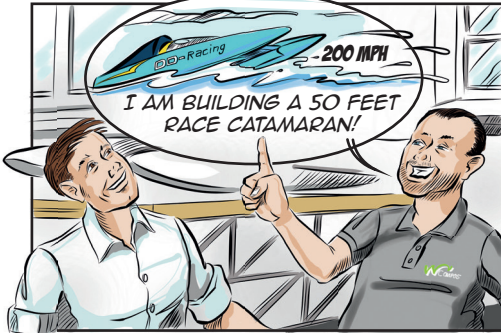
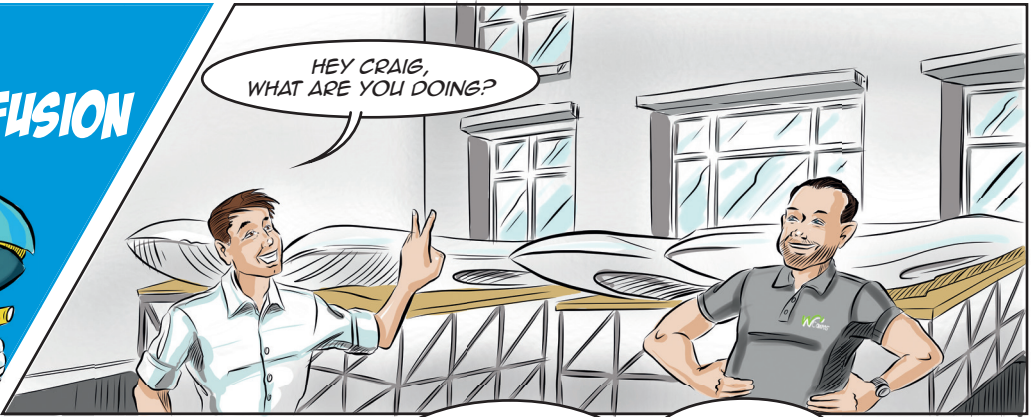
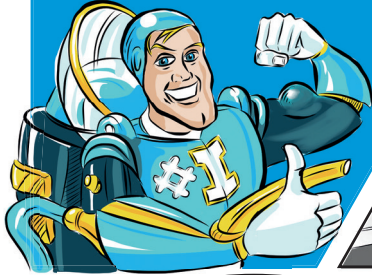


INFUSION MAN



INFUSION MAN THE ONE SHOT INFUSION



03

CONTENT

Evacuation line

MTI® hose	4
Resin Brake Line	6

Evacuation film

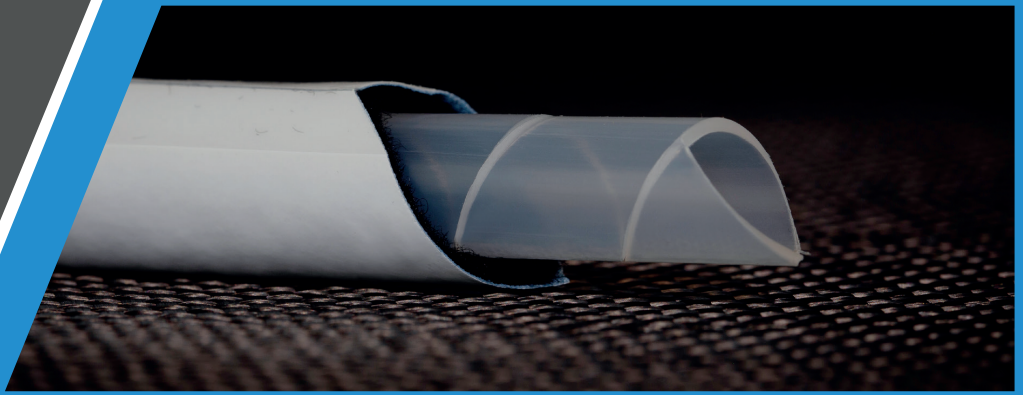
Resin Brake Film	8
Resin Brake Bag	10

Resin feed line

Resin feed line Sidewinder	12
Resin feed line Blade Runner®	14
Blade Runner® Connector	16

Accessories vacuum infusion

Vac Checker®	18
Tube clip Squeezee® and Squeezer®	20
MTI® Valve	22
The Sticky Can	24

**04**

*„The **MTI® hose**: process stability in the appearance of a line“*

The **MTI® hose** replaces spiral tubes or any other media that has been used in any evacuation process. It is a spiral tube coated with an air permeable but resin blocking membrane. **MTI® hose** is positioned around the mold parameter and the effect of race tracking resin is eliminated. The membrane prevents resin entering the evacuation line. The closed system encreases process stability and laminate quality.

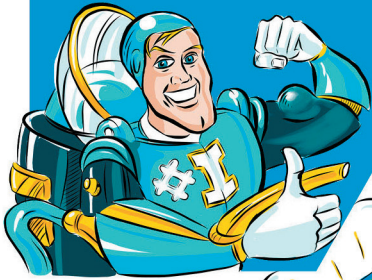
- less effort for preparing the infusion process
- no resin trap necessary
- few investment cost
- visible infusion process
- minimize of resin consumption
- resin allocation independend from evacuation hose
- small molding lips
- reduction of Dry Spots
- complete impregnation of the fabric
- more process stability for single piece production and small series
- minimize material consumption
- high fiber-to-volume ratio, adjustable through injected resin volume

MTI® hose

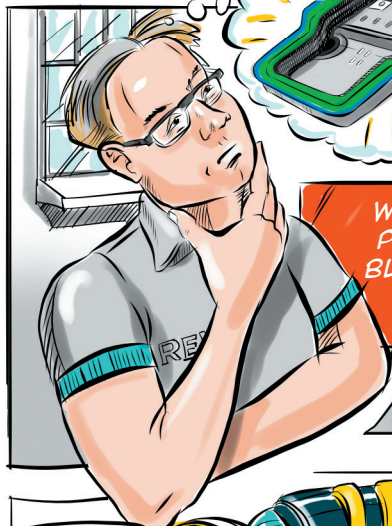
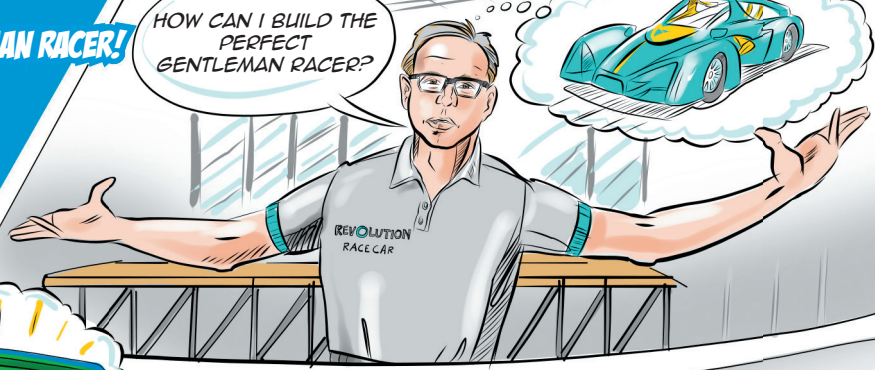
Item number: 10210100

Standard length: 100m

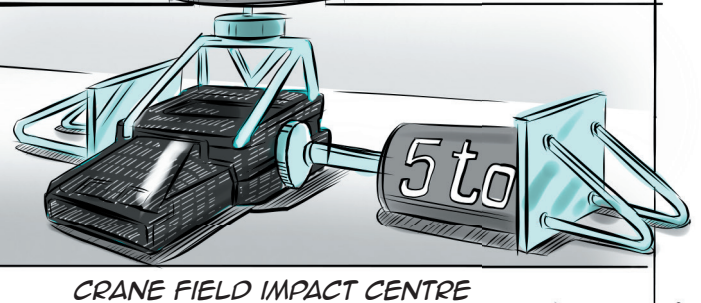
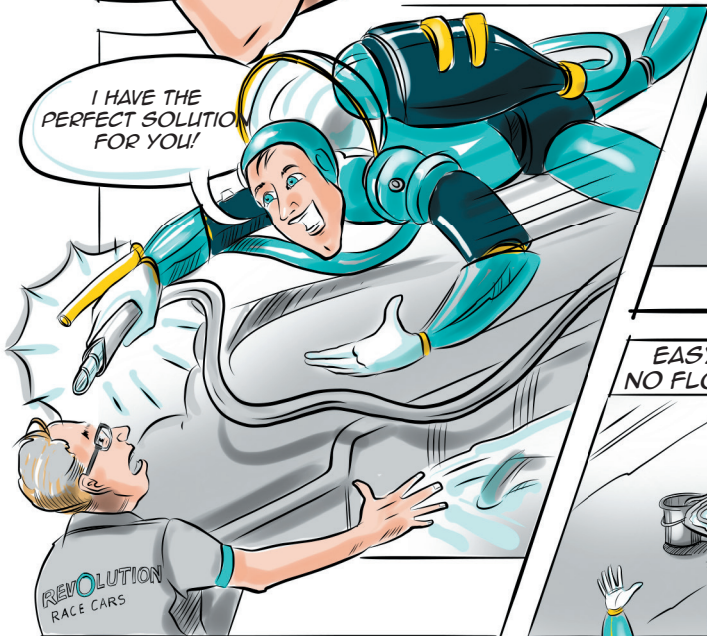
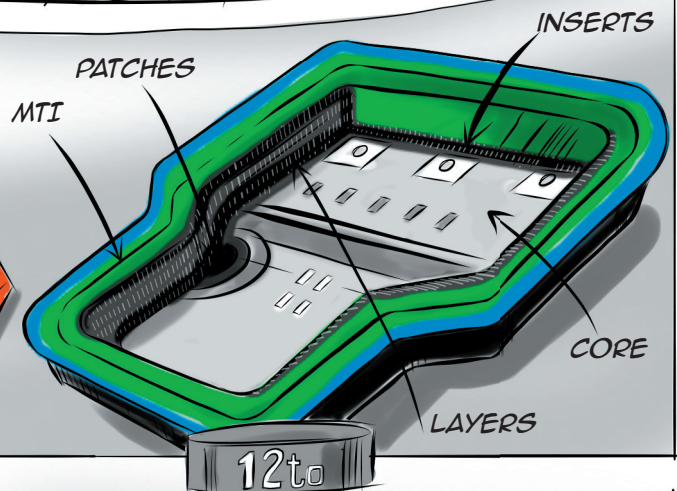
**INFUSION MAN NO 3
BUILDING THE ULTIMATE GENTLEMAN RACER!**



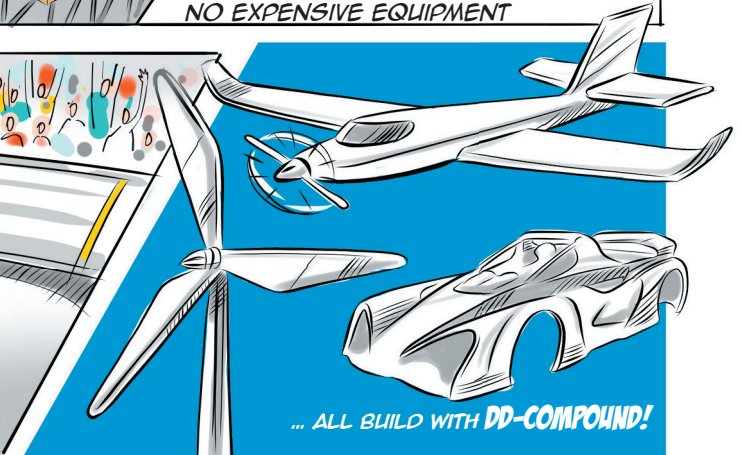
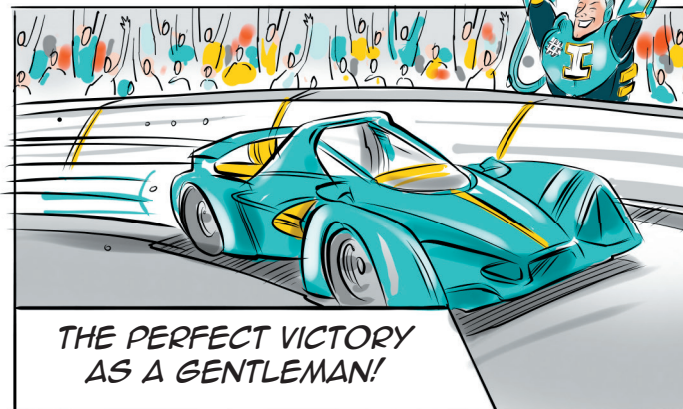
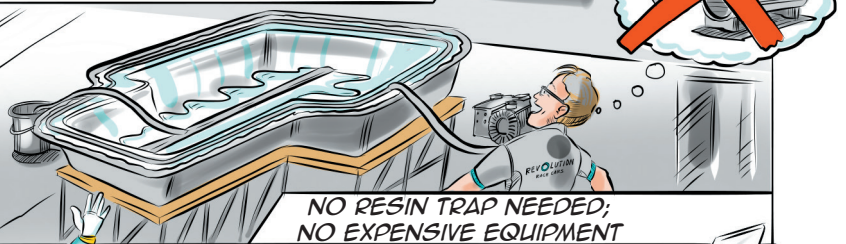
HOW CAN I BUILD THE PERFECT GENTLEMAN RACER?

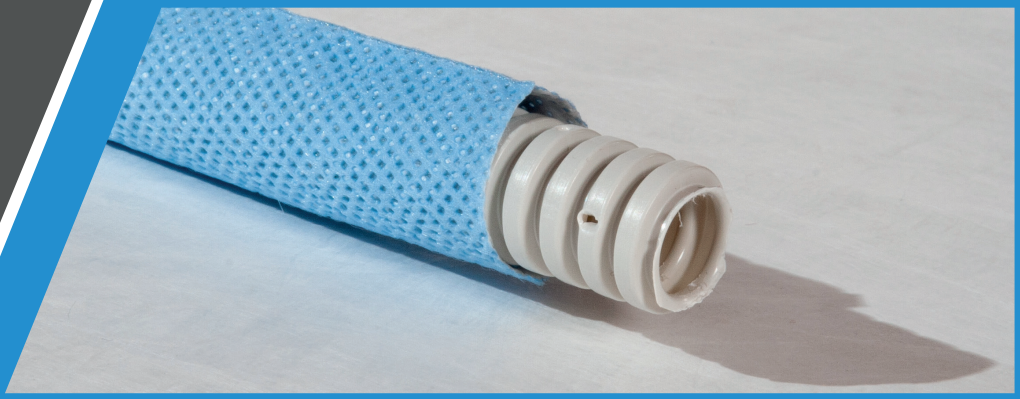


WE HAVE A COM-
PLEX TUB TO BE
BUILD AND IT WILL
BE INFUSED!



EASY INFUSION THANKS TO MTI;
NO FLOW FRONT CONTROL NEEDED



**06**

„Membrane hose for Wind turbine blades“

The **Resin Brake Line®** is a cost out product especially developed for big, less shaped parts. It combines the benefits of the **MTI® hose** with the requirements of the wind industry.

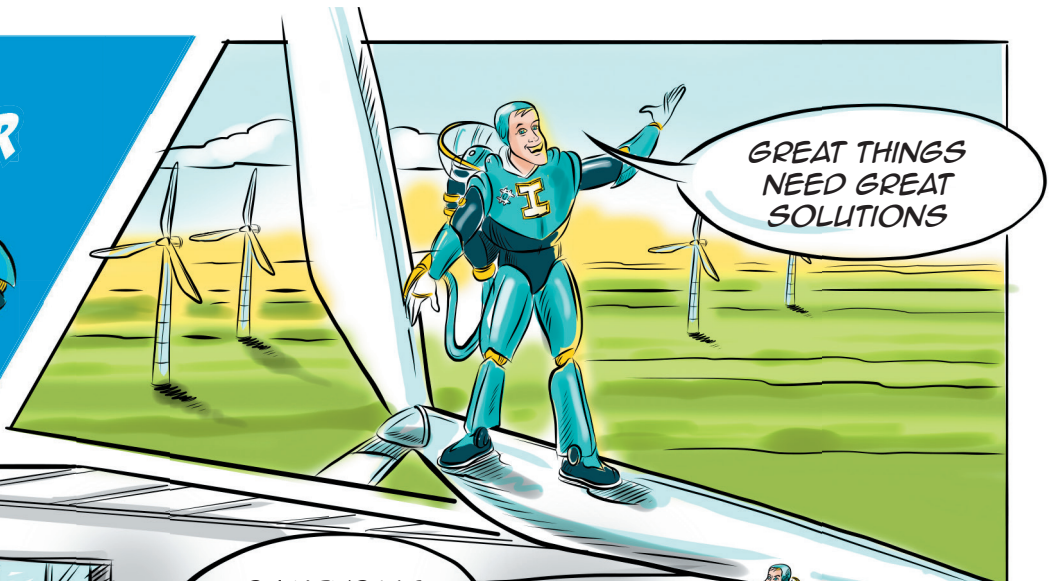
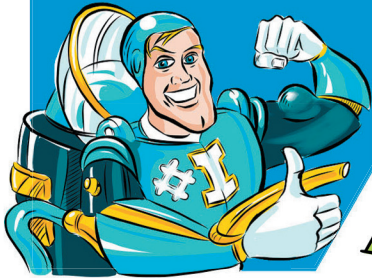
- less effort for preparing the infusion process
- no resin trap necessary
- few investment cost
- visible infusion process
- minimize of resin consumption
- resin allocation independend from evacuation hose
- small molding lips
- reduction of Dry Spots
- complete impregnation of the fabric
- more process stability for single piece production and small series
- minimize material consumption
- high fiber to volume ratio, adjustable through injected resin volume

Resin Brake Line®

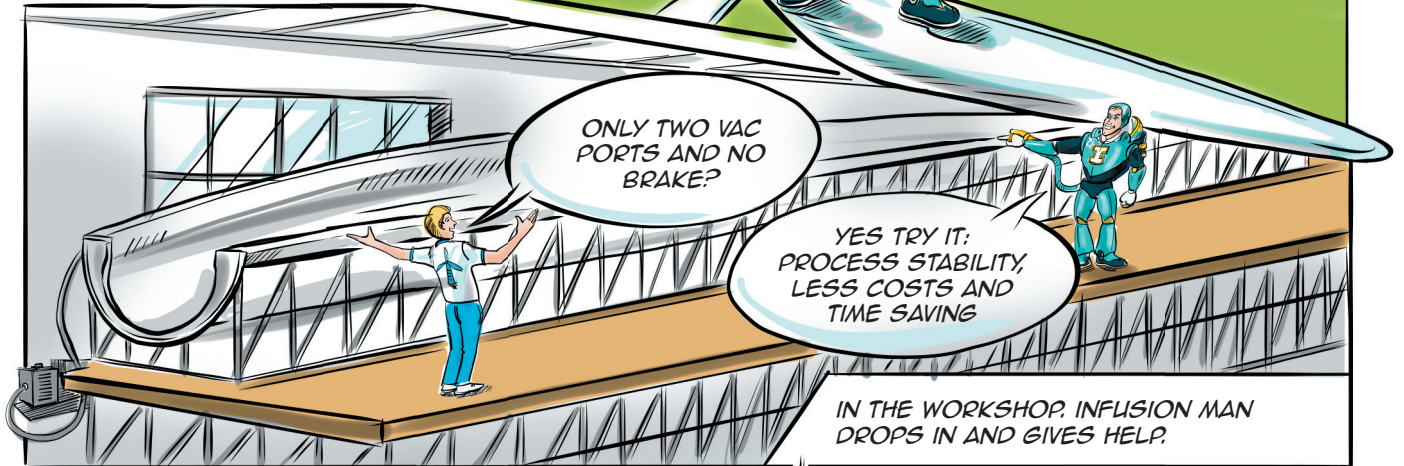
Item number: 11340433

Standard length: 400m

INFUSION MAN Nº 4
THE TIME SAVER



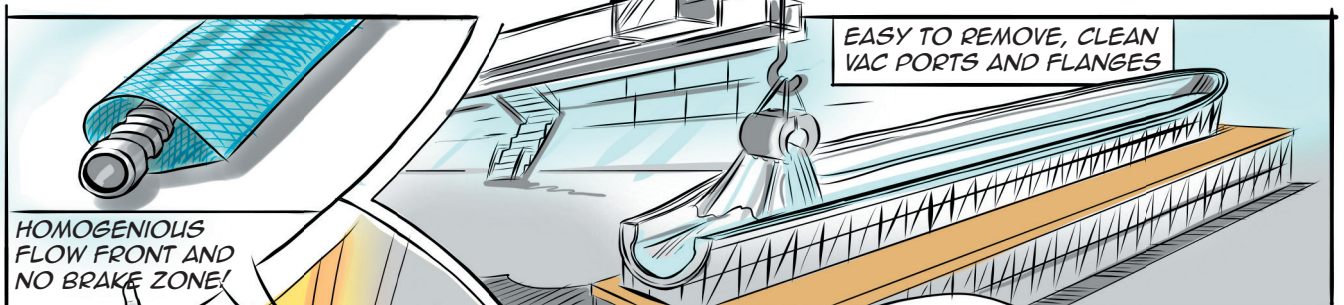
GREAT THINGS
NEED GREAT
SOLUTIONS



ONLY TWO VAC
PORTS AND NO
BRAKE?

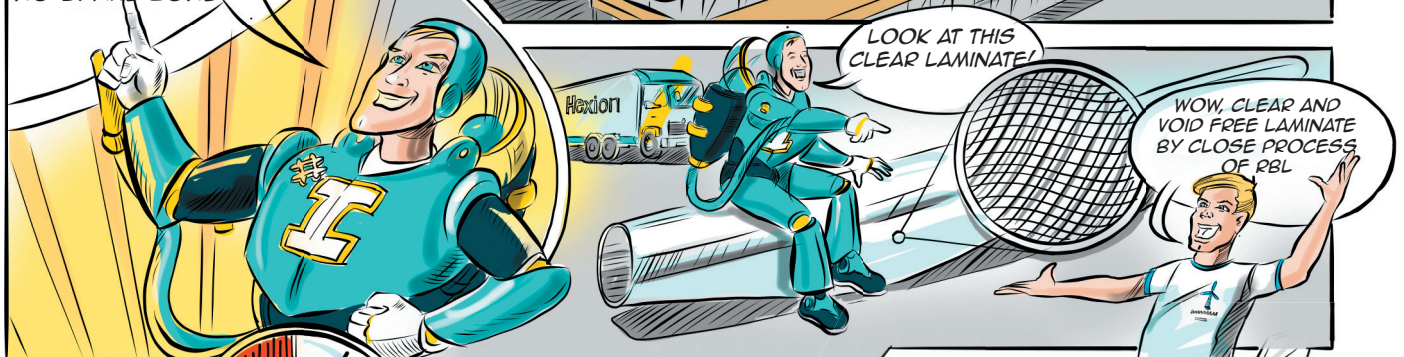
YES TRY IT:
PROCESS STABILITY,
LESS COSTS AND
TIME SAVING

IN THE WORKSHOP, INFUSION MAN
DROPS IN AND GIVES HELP.



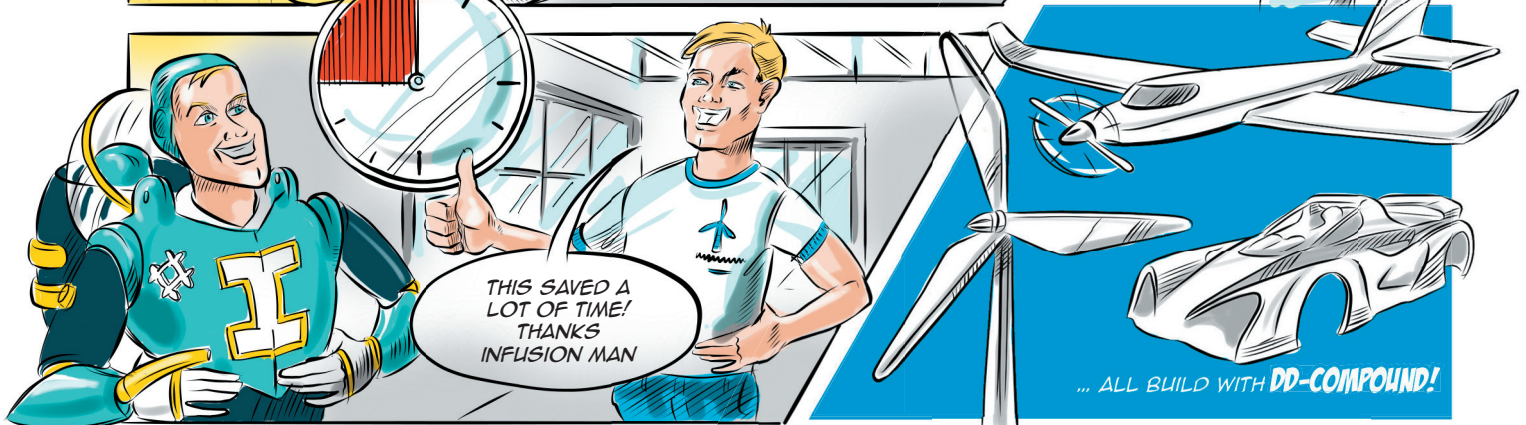
EASY TO REMOVE, CLEAN
VAC PORTS AND FLANGES

HOMOGENIOUS
FLOW FRONT AND
NO BRAKE ZONE!



LOOK AT THIS
CLEAR LAMINATE!

WOW, CLEAR AND
VOID FREE LAMINATE
BY CLOSE PROCESS
OF RBL



THIS SAVED A
LOT OF TIME!
THANKS
INFUSION MAN

... ALL BUILD WITH **DD-COMPOUND!**

**08**

The **Resin Brake Film®** is a multilayer functional film which can be used in the vacuum infusion process. The **Resin Brake Film** is used over the whole surface of the part. The air is evacuated through the film. The resin is slowed down by the film so the airflow on top of the membrane is kept open until the fibres are saturated under the film. The resin can travel through the film after infusion to create a homogeneous laminate and evacuate excess resin. This can be controlled by the applied vacuum after infusion.

- No Dry Spots
- Equal Fibre Volume Ratio
- Easy Handling
- Can be customized
- Void free laminate
- Process stability

Resin Brake Film®

Item number: 11340452

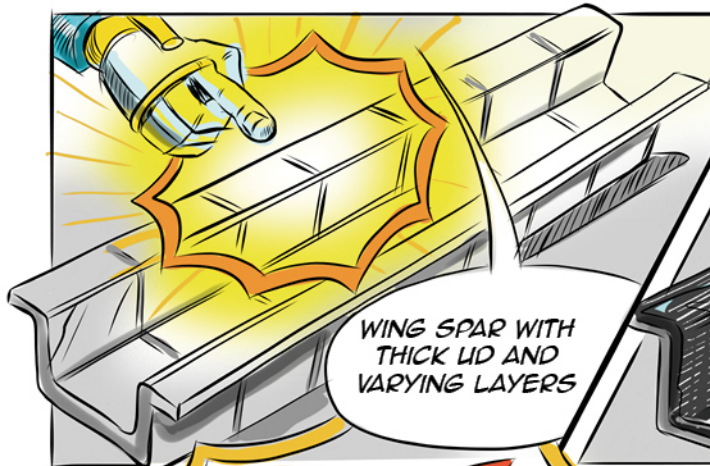
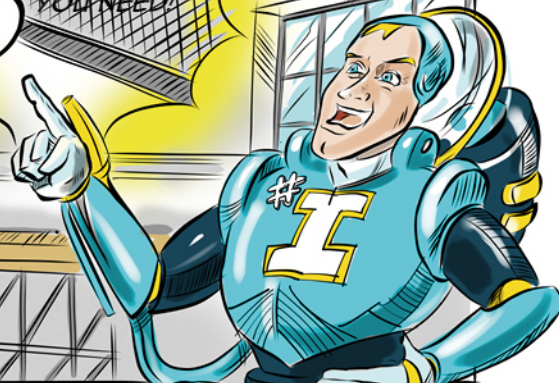
Standard length: customized

INFUSION MAN FITS PERFECTLY!

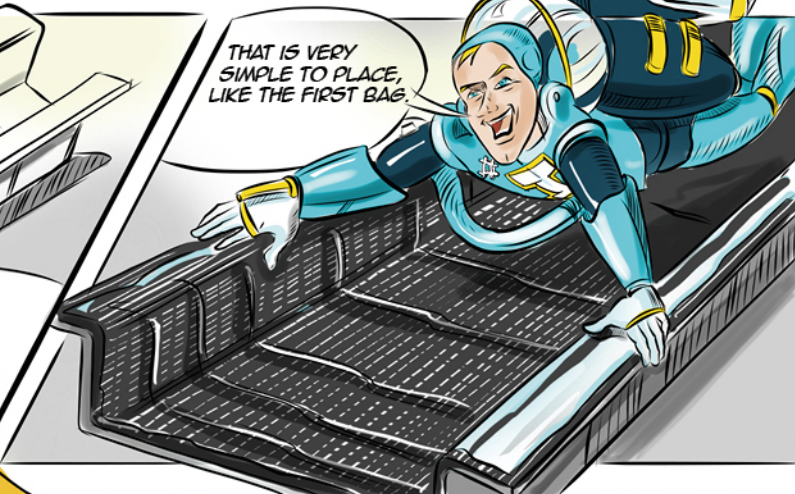


HI, WE HAVE TO INFUSE
A THICK, COMPLEX
PART WITH SEVERAL
INFUSION PORTS.

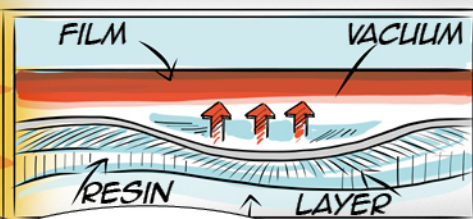
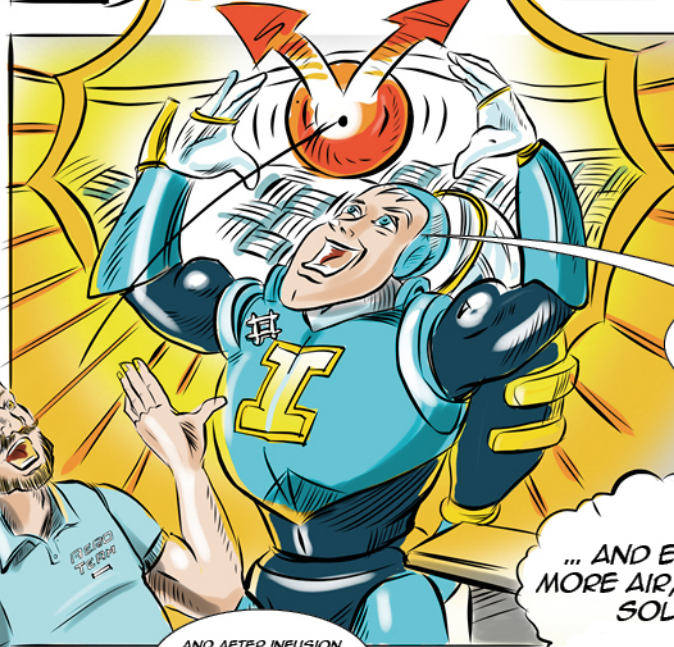
RESIN BRAKE
FILM IS WHAT
YOU NEED!



WING SPAR WITH
THICK LID AND
VARYING LAYERS



THAT IS VERY
SIMPLE TO PLACE,
LIKE THE FIRST BAG.

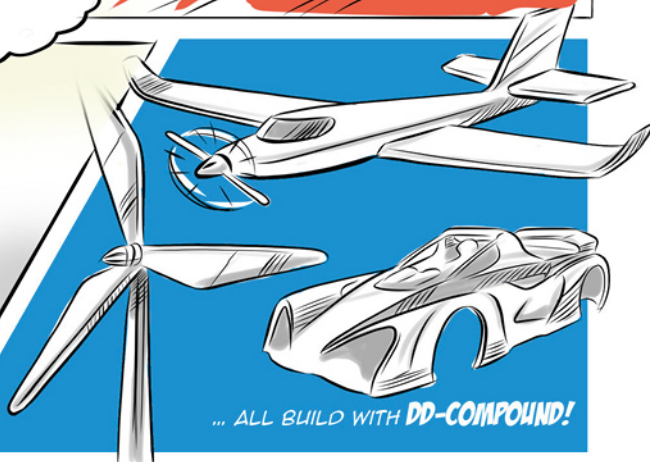
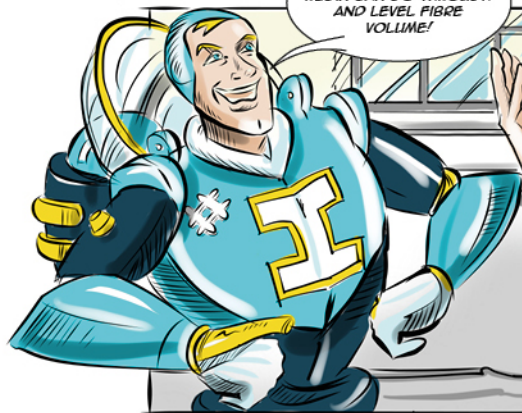


AND IT IS CLOSING
DRY SPOTS!



... AND EVACUATING
MORE AIR, THAT IS THE
SOLUTION!

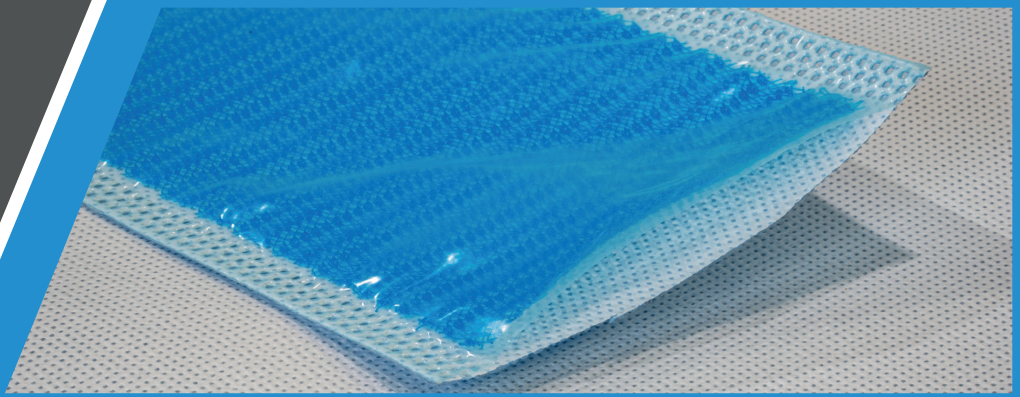
AND AFTER INFUSION
RESIN CAN GO THROUGH
AND LEVEL FIBRE
VOLUME!



... ALL BUILD WITH DD-COMPOUND!



10



„Membrane hose for Wind turbine blades“

The **Resin Brake Bag®** can be used in the vacuum infusion process to evacuate the air. The Resin Brake Bag has a three-layer construction. It consists of the resin brake film, a flow media and a multilayer bagging film. It is a sealed flat channel.

The **Resin Brake Bag®** is used selective over surface of the part. It must be connected with the evacuation line. The air is evacuated through the film. The resin is slowed down by the film, so the airflow on top of the membrane is kept open until the fibres are saturated under the film.

- Outside in infusion setup
- No print on laminate
- Endless material
- High airflow
- Easy to remove
- No Dry Spots
- Layup time reduction
- Available in standard width 100mm/300mm

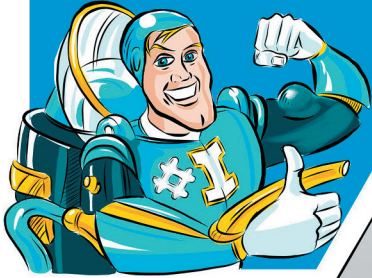
Resin Brake Bag®

Item number: 11340438

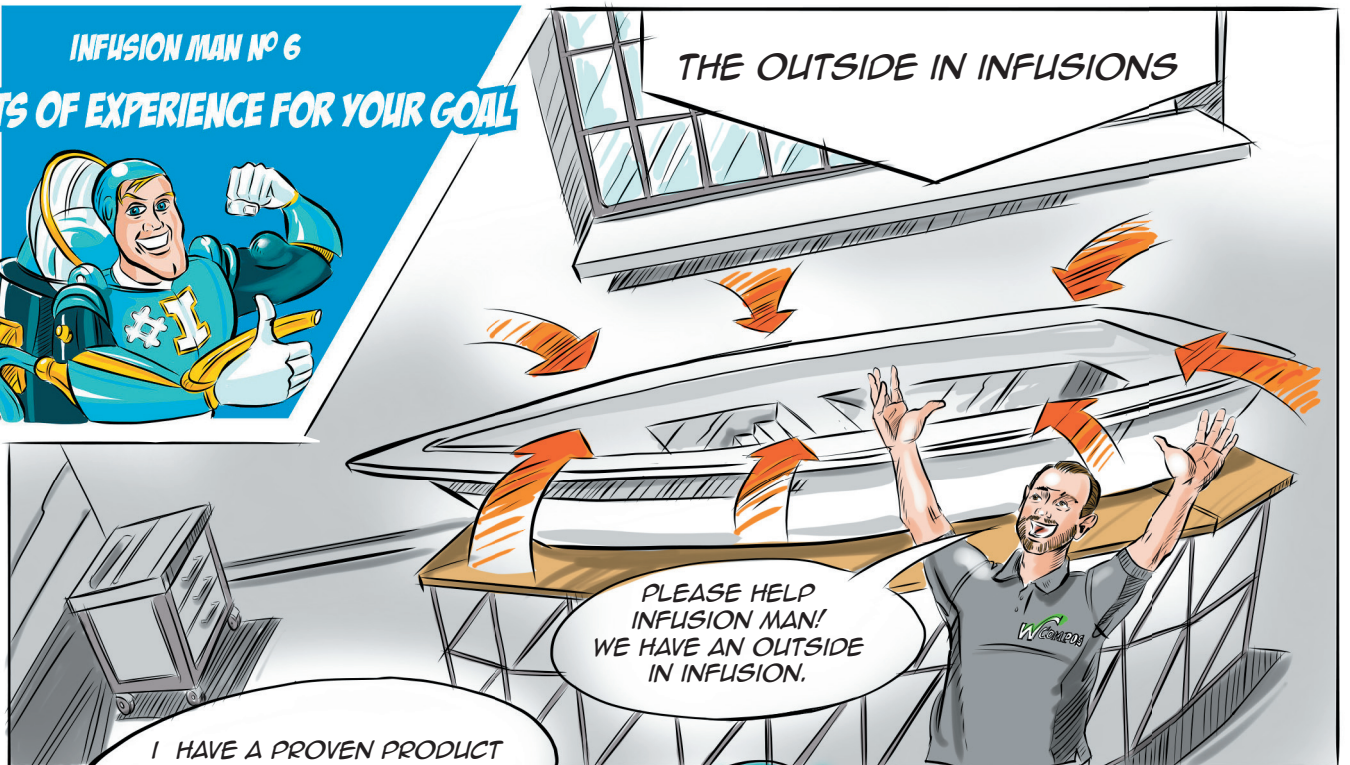
Standard length: customized

INFUSION MAN Nº 6

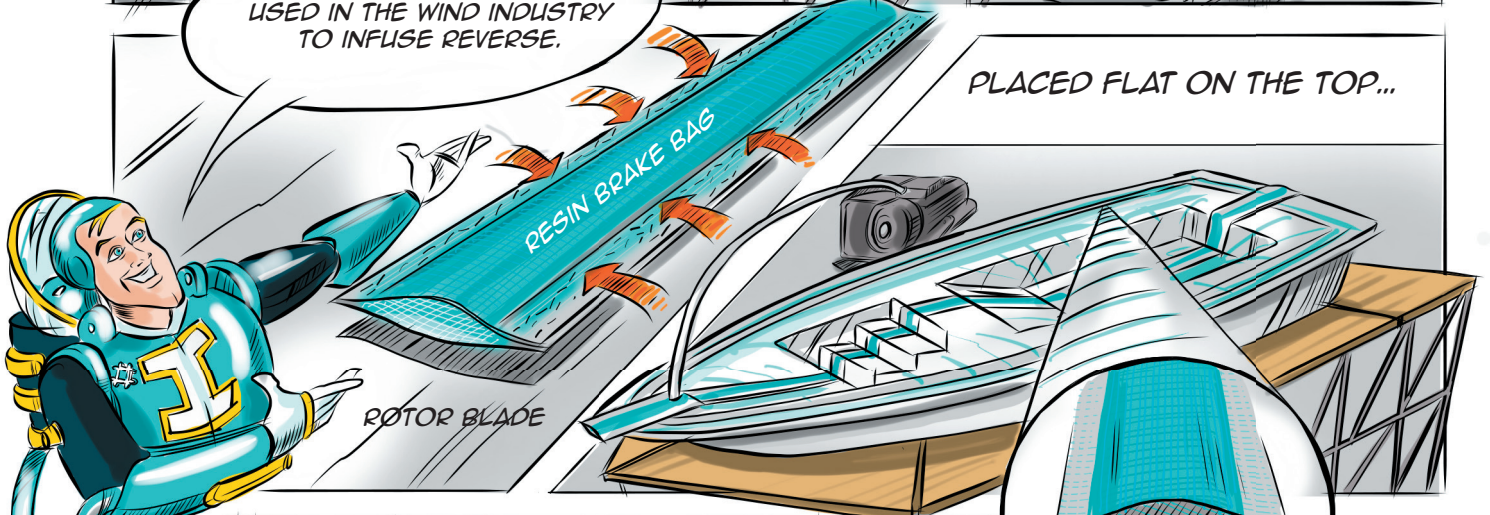
LOTS OF EXPERIENCE FOR YOUR GOAL



THE OUTSIDE IN INFUSIONS



I HAVE A PROVEN PRODUCT USED IN THE WIND INDUSTRY TO INFUSE REVERSE.

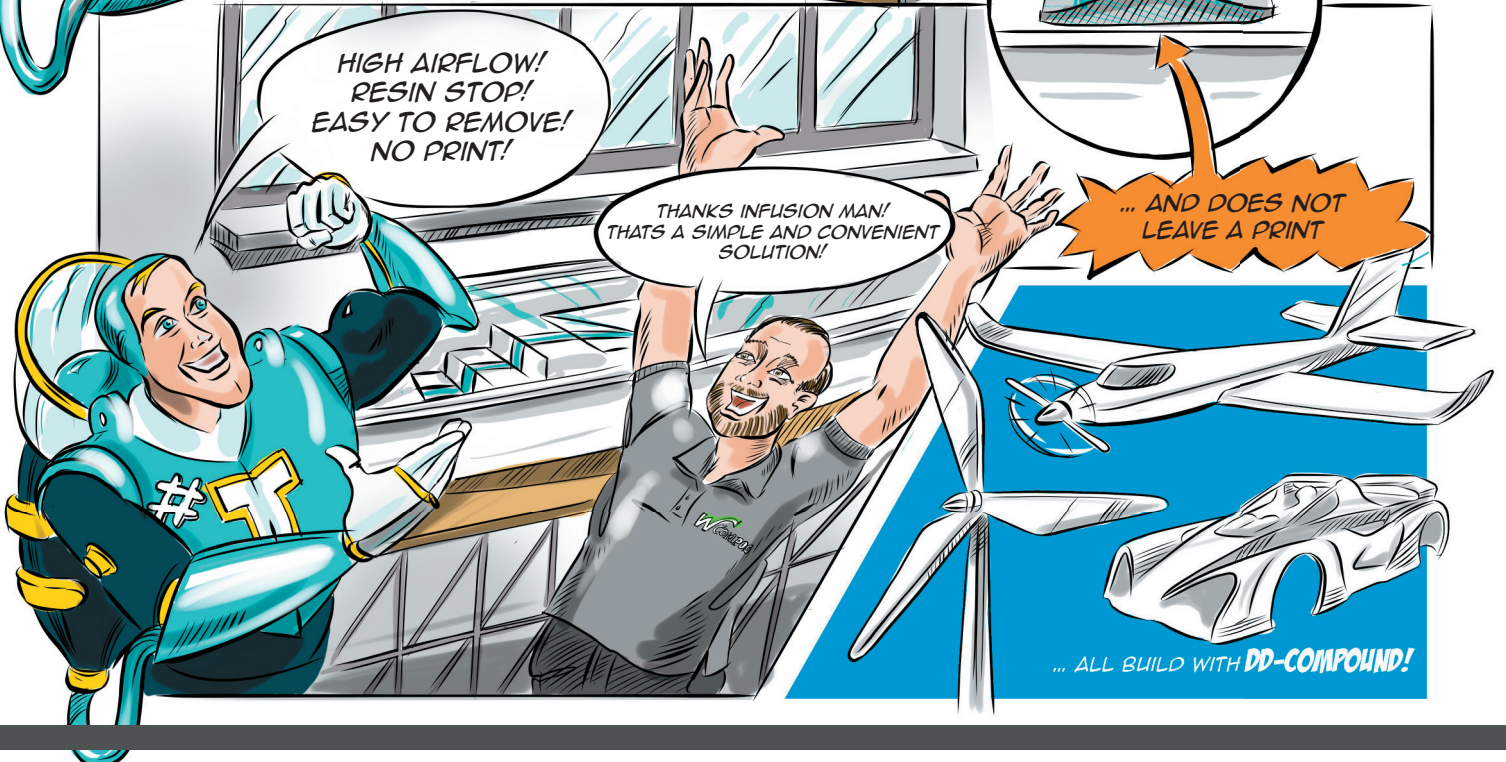


PLACED FLAT ON THE TOP...

HIGH AIRFLOW!
RESIN STOP!
EASY TO REMOVE!
NO PRINT!

THANKS INFUSION MAN!
THAT'S A SIMPLE AND CONVENIENT
SOLUTION!

... AND DOES NOT
LEAVE A PRINT





12



Sidewinder® is a combination of a corrugated tube and a transport fleece. The resin feed line is very stable by the unique construction and the manufacturing process. Thereby it is easier to place and fix it at the desired place. By the application of **Sidewinder®**, working hours for the setup and time for the infusion can be saved.

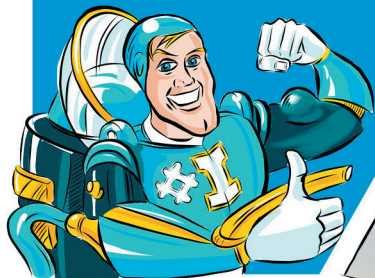
- Length customized
- Easy handling
- Equal flow front
- Infusion length up to 100m with 1 inlet
- Easy to remove
- Less air in resin
- Less waste

Resin feed line Sidewinder®

Item number: 11340236

Standard length: customized

INFUSION MAN NO 7 FITS PERFECTLY!



CRISIS SITUATION IN THE WORKSHOP

THE FLOW FRONT IS NOT EVEN

WE SHOULD ASK INFUSION MAN!

USE SIDEWINDER!
IT IS DESIGNED TO SPEED UP INFUSION
AND LEVEL THE FLOW FRONT.

AND SAVES
A LOT OF TIME!

WOW!
IT COMES ON A ROLL AND CAN
BE PLACED SUPERQUICK
AND EASY...

YES!
AND THE DESIGN
ALLOWS INITIAL AIR
TO BE EVACUATED,
SO IT DOES NOT
AFFECT THE
INFUSION.

ALSO THE SIZE OF THE HOLES HAS THE DIMENSION
TO LET THE RESIN FLOW ALONG THE SIDEWINDER
FIRST AND THEN ENTER THE PART

THAT RESULTS
IN A QUICKER INFUSION WITH
EVEN FLOW FRONT!

GREAT INFUSION MAN!
THANK YOU

... ALL BUILD WITH **DD-COMPOUND!**



14



Boat Runner® is an infusion line made for boat building. Boat Runner® is a patented infusion line that has a high resin flow longitudinal but lows it down into the part. Also it is designed to leave no print and minimize white areas below infusion line.

The **Boat Runner®** up to 150' can be feed with one resin inlet. By minimizing resin inlets the risk of leaks in the infusion process is minimized.

For the infusion of the Donzi 44 Icon hull only 7 resin inlet points were necessary and could be reduced to 5 in serial production.

Result is a void and dryspot free infused hull.

- Easy handling
- No print
- Long feed distance
- Homogenous Flowfront
- No white spots

Resin feed line Boat Runner® L Ø 20mm

Item number: 11340276

Standart length: 150m

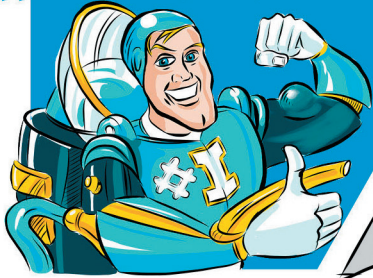
Resin feed line Boat Runner® S Ø 16mm

Item number: 11340277

Standart length: 200m

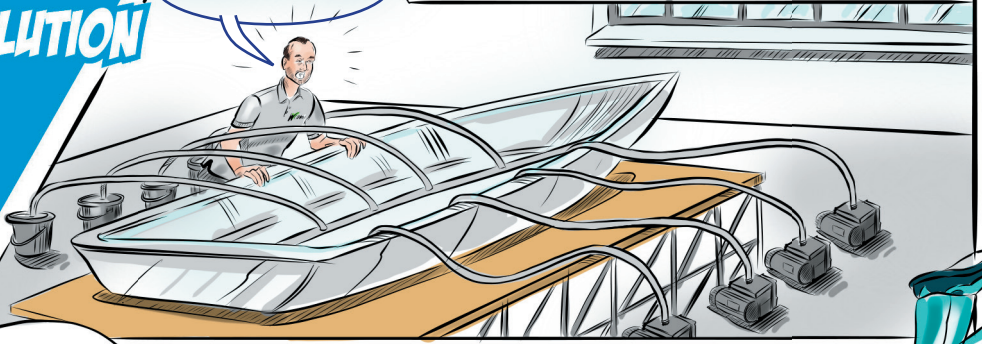
INFUSION MAN Nº 8

THE ALL IN ONE SOLUTION



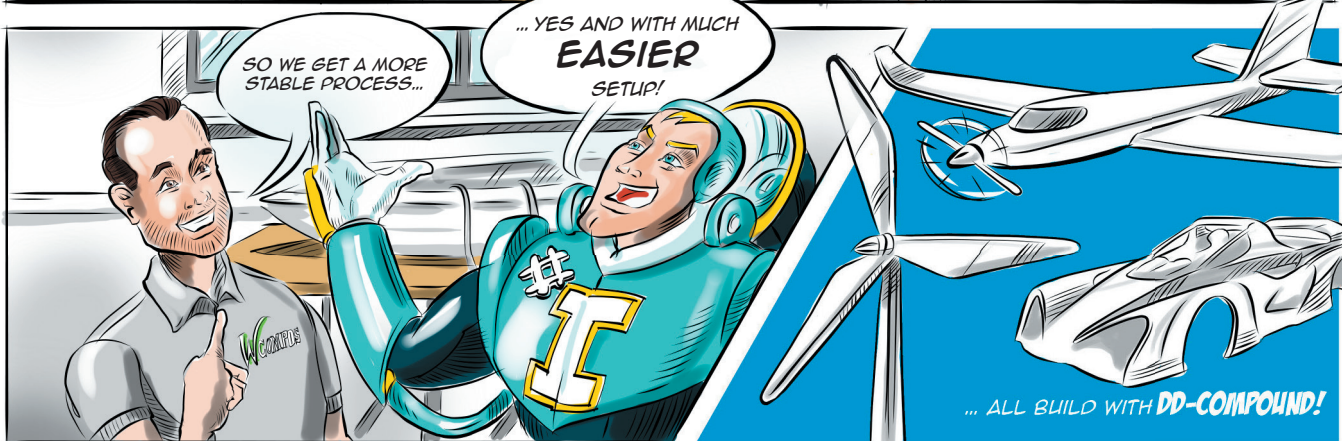
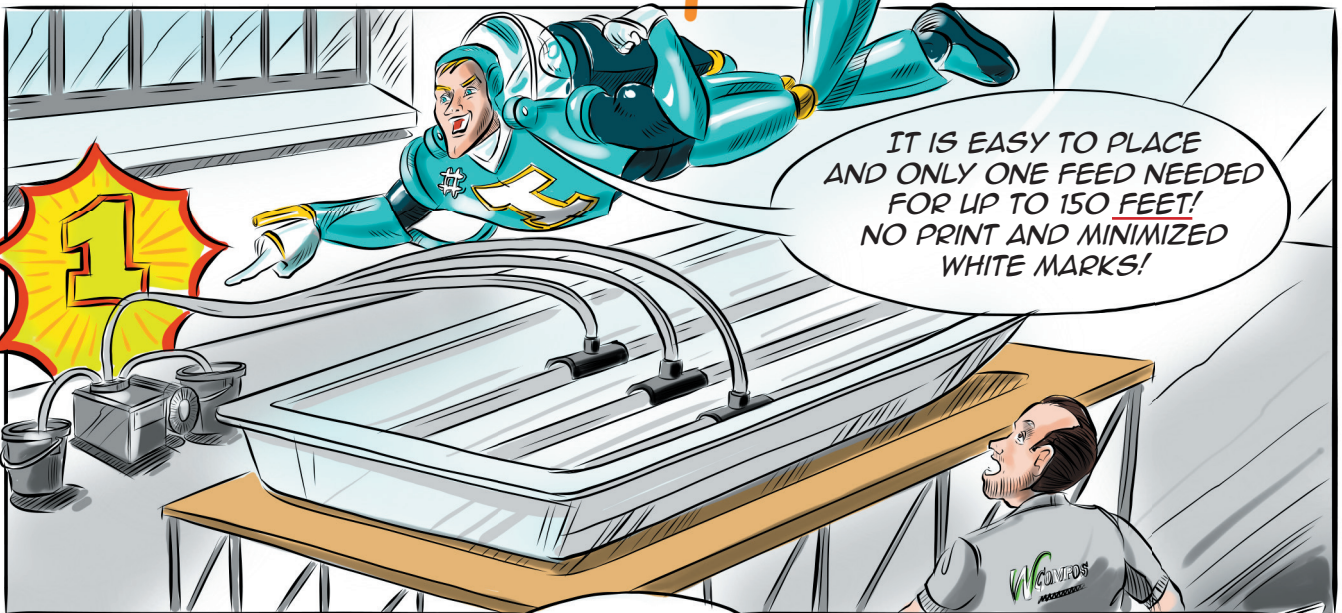
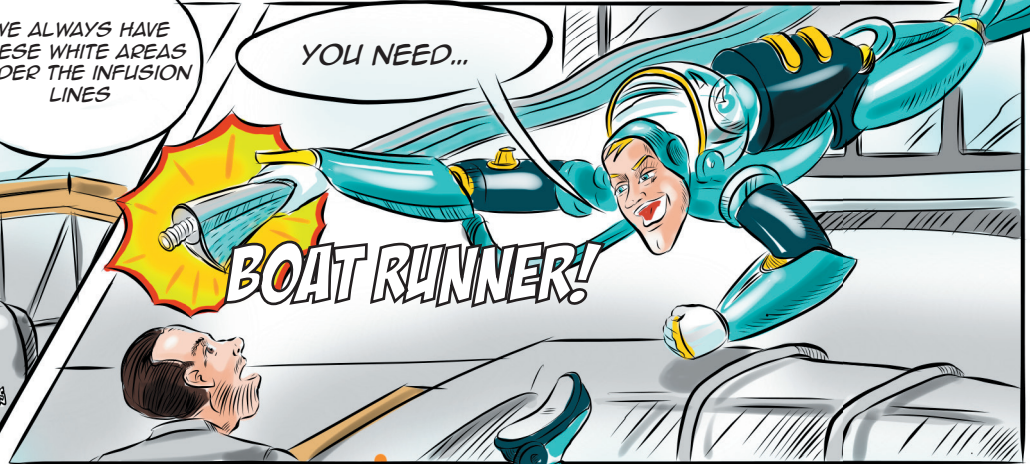
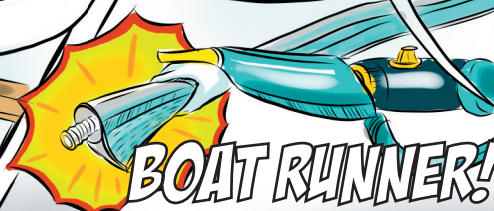
LOTS OF LEAKS!

IN THE WORKSHOP AFTER AN INFUSION



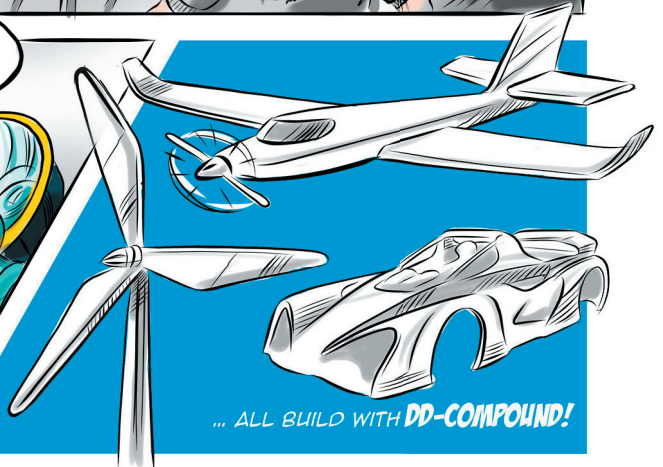
WE ALWAYS HAVE THESE WHITE AREAS UNDER THE INFUSION LINES

YOU NEED...



SO WE GET A MORE STABLE PROCESS...

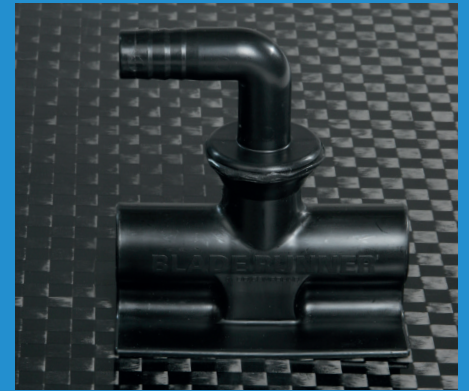
... YES AND WITH MUCH **EASIER** SETUP!



... ALL BUILD WITH **DD-COMPOUND!**



16



The **Blade Runner® Connector** has been developed specially for the resin feed line **Blade Runner®**. With this connector, inlet points can be set easily and safely. The **Connector** is placed on the resin line. The matching connection tap is then inserted from above. Two different connection taps are available: One vertical and one angled. Appropriately assembled sealing rings are placed between the connector and the connecting tap. These sealing rings ensure an airtight connection.

- Safe infusion point
- Easy handling
- Secured connection
- Push through bag design
- 0° or 90°
- Saves time

Blade Runner Connector

Item number: 10219900

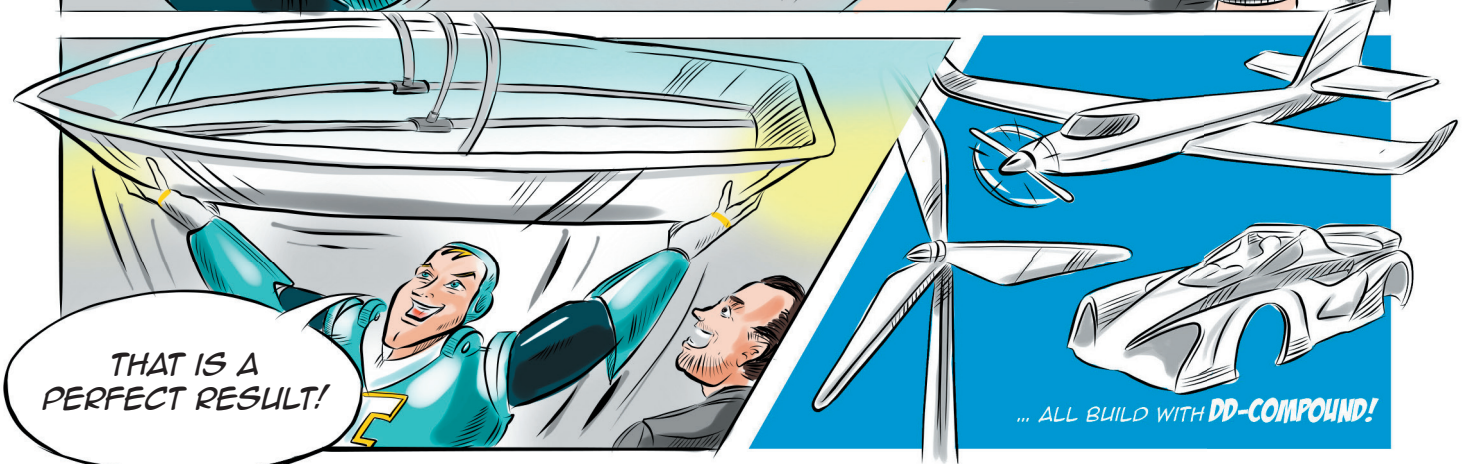
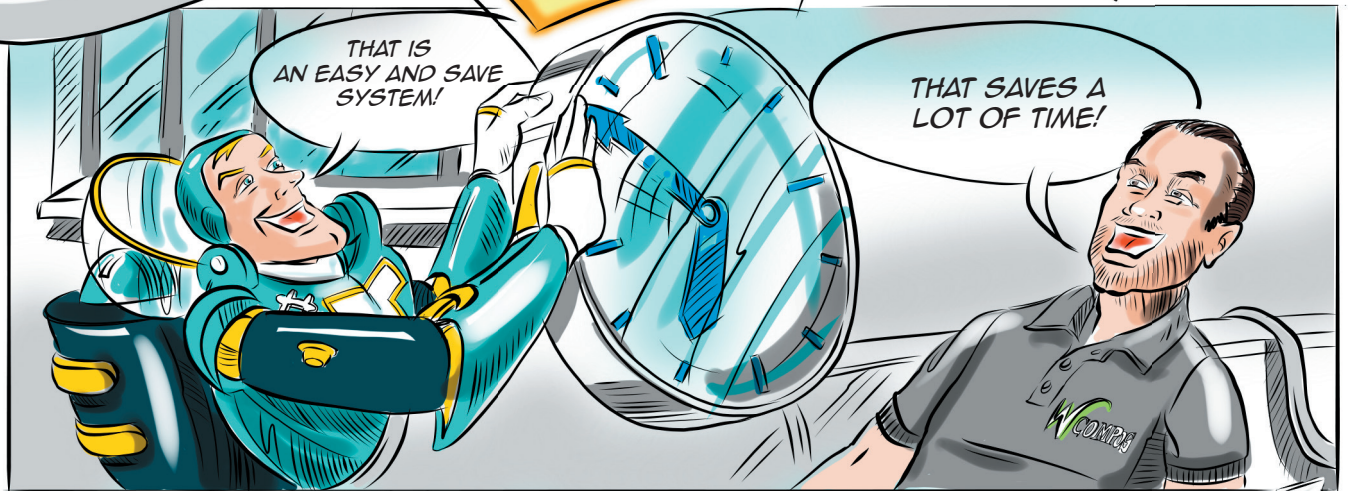
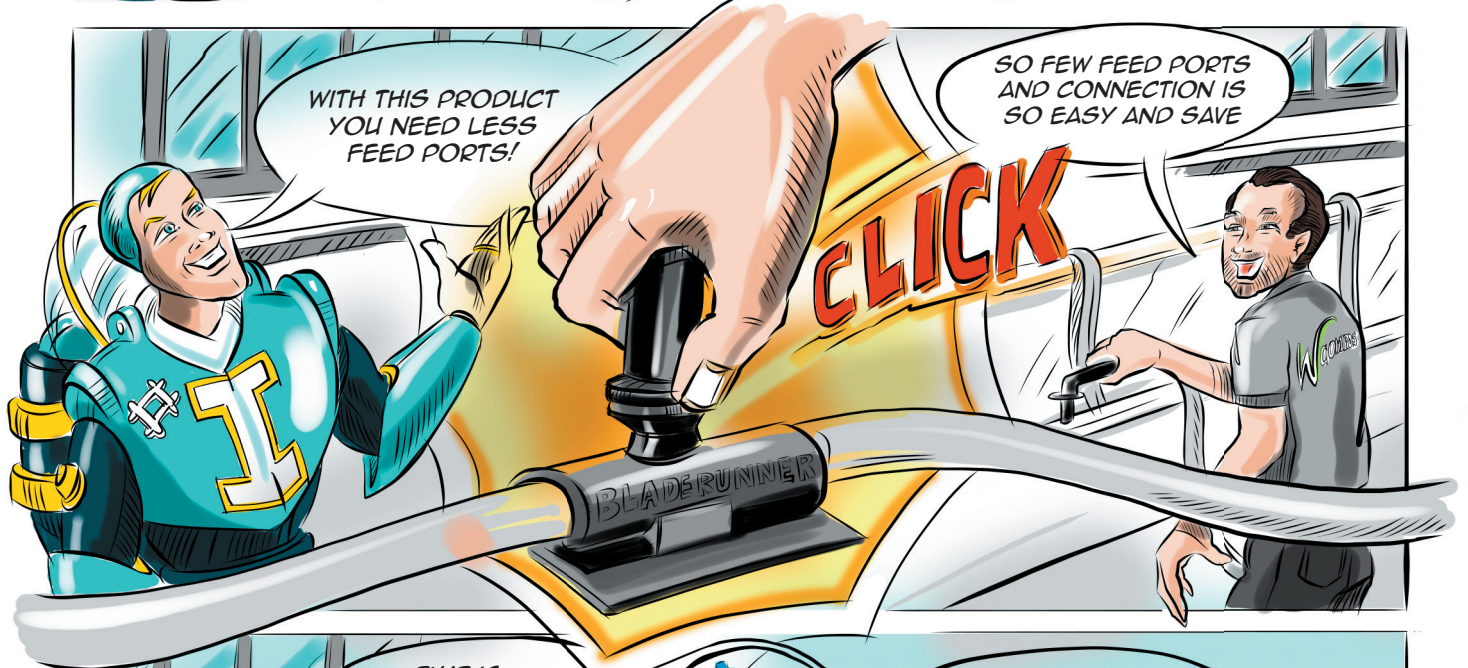
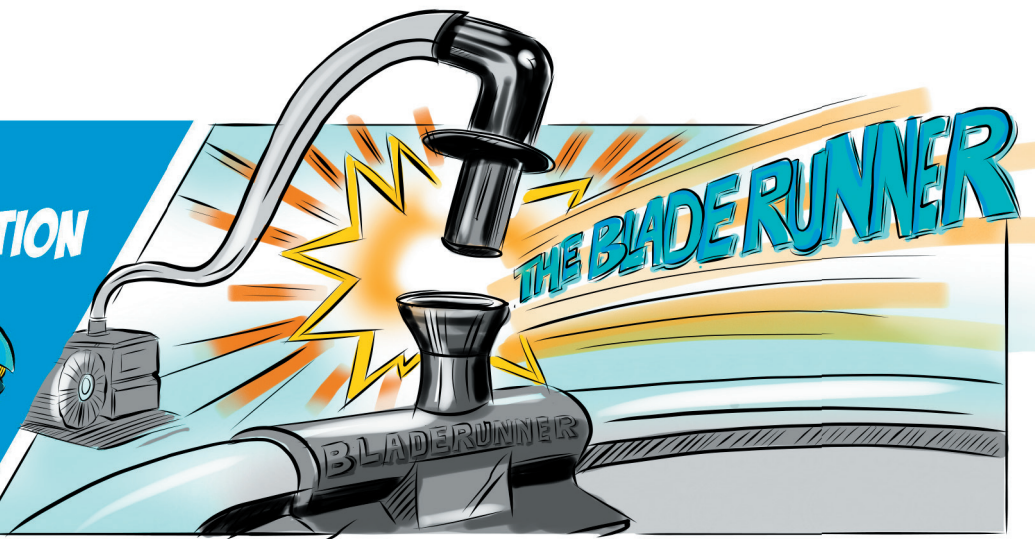
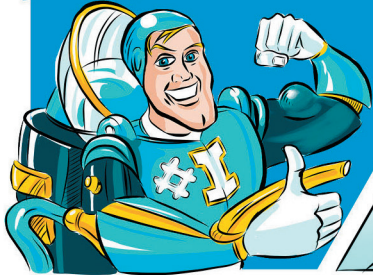
Minimum Ordered Quantity: 10 pc.

Blade Runner-sealing ring

Item number: 10219920

Minimum Ordered Quantity: 265 pc. / 1 Box

INFUSION MAN Nº 9
A SIMPLE SOLUTION





18



Digital vacuum gauge **Vac Checker®** from DD-Compound is a very robust tool.

The Vac Checker® does not only show the absolute pressure, it also shows the boiling point of water inside the laminate. This helps when infusing with hygroscopic materials like Balsa or Aramid. Also the high resolution below 20mbar make quick leak tests possible within the first 30 seconds and helps to find leaks.

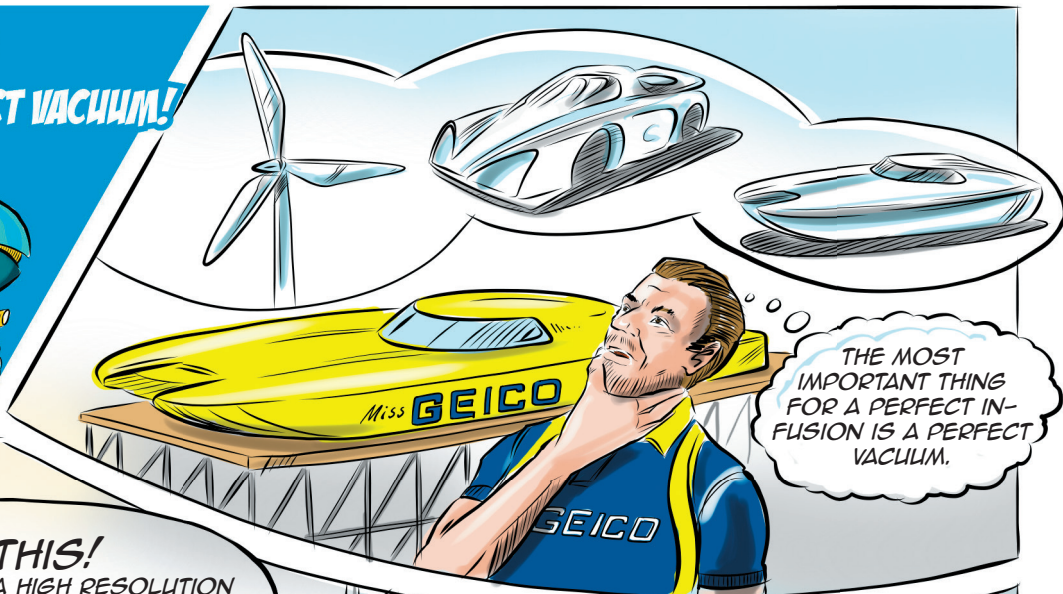
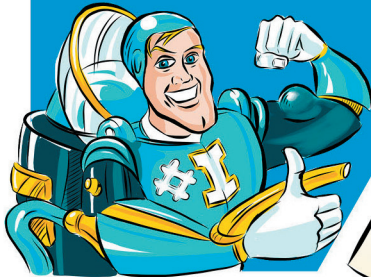
- Absolute pressure sensor, 6 bar / 87 psi
- Measuring range: 1.100 to 0 mbar
- Vacuum resolution: 0,01 mbar / 10 micron
- Parameter: mmHg, Torr, mbar, hPa, micron, inH2O, inHg, Pa
- Overload (rel): 5 bar (rel) / 72 psi (rel)
- Attachments: Connection adapters for pipes with an internal diameter of:
 - o 6 mm
 - o 8 mm
 - o 10 mm

Vac Checker®

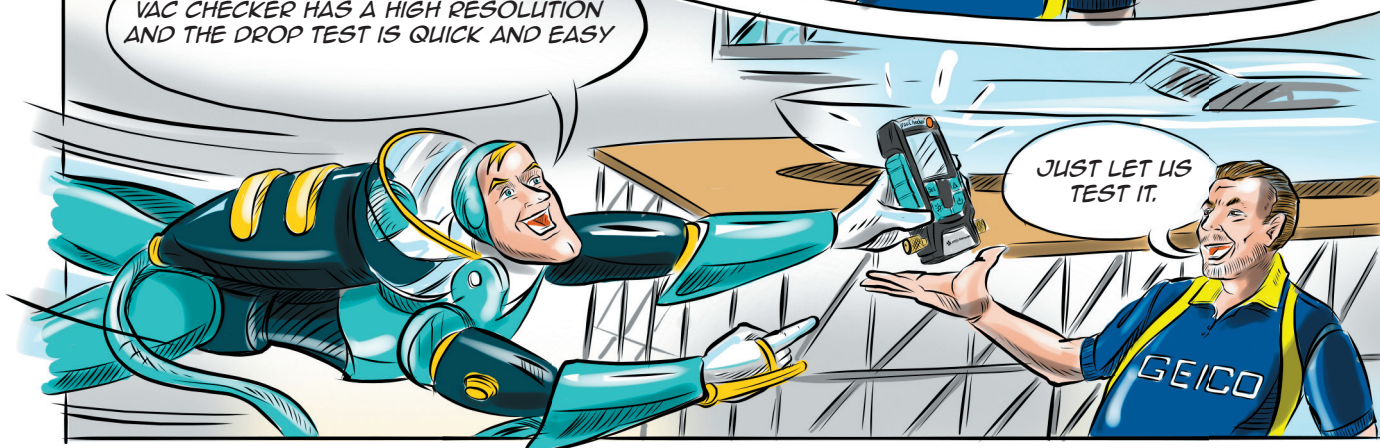
Item number: 11340148

Minimum Ordered Quantity: 1 pc.

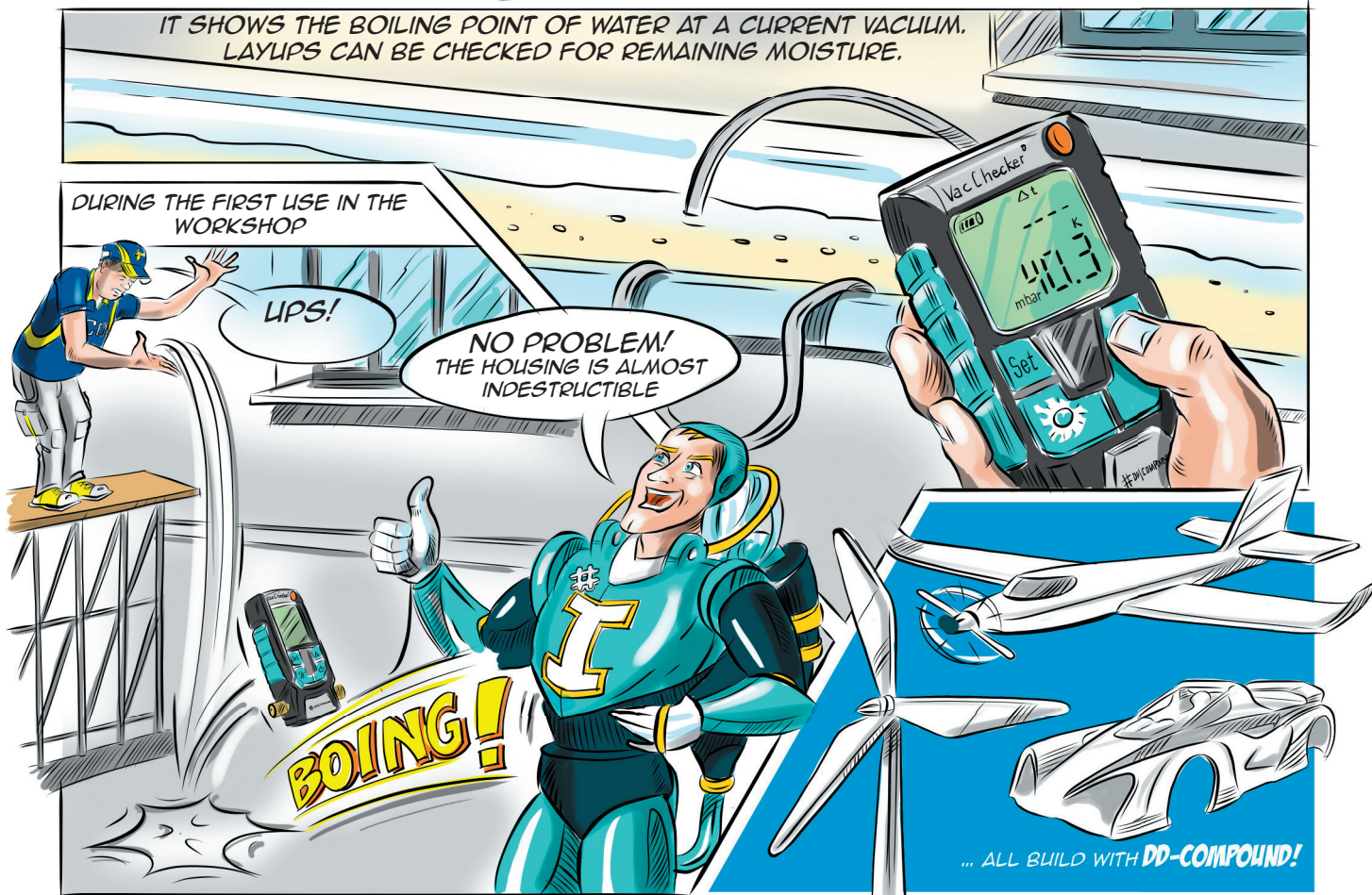
INFUSION MAN Nº 10
ESTABLISH THE PERFECT VACUUM!



TRY THIS!
VAC CHECKER HAS A HIGH RESOLUTION
AND THE DROP TEST IS QUICK AND EASY

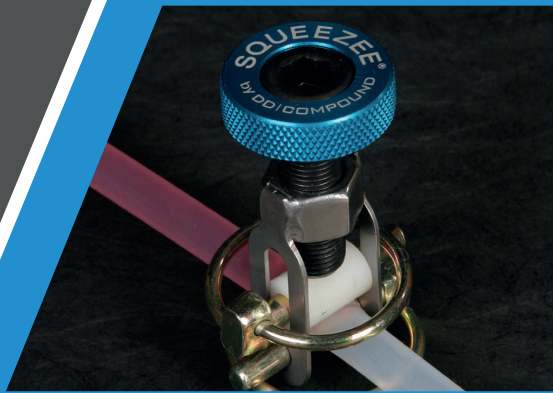


IT SHOWS THE BOILING POINT OF WATER AT A CURRENT VACUUM.
LAYUPS CAN BE CHECKED FOR REMAINING MOISTURE.





20



The tube clips **Squeeze®** and **Squeezer®** of DD-Compound are the solution for adjusting the resin flow and disconnecting resin- and vacuum lines. The tube clip will convince by the easy use and exact dosing of the resin flow. Both allows disconnecting the resin feed line without much force. Because of the solid construction the tube clips are suitable for the everyday, industrial use.

Squeeze® is suitable for different kind of tubes with an outer diameter up to 15mm.

Squeezer® is suitable for different kind of tubes with an outer diameter up to 25mm.

- The perfect line clamp
- Lifetime warranty
- Two finger flow control
- Designed for everyday industrial use
- For resin and vacuum lines
- Perfect infusion results

Squeeze®

Item number: 10430010

Minimum Ordered Quantity: 10 pc.

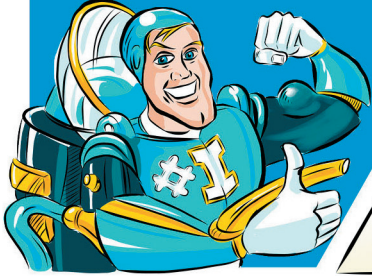
Squeezer®

Item number: 10430020

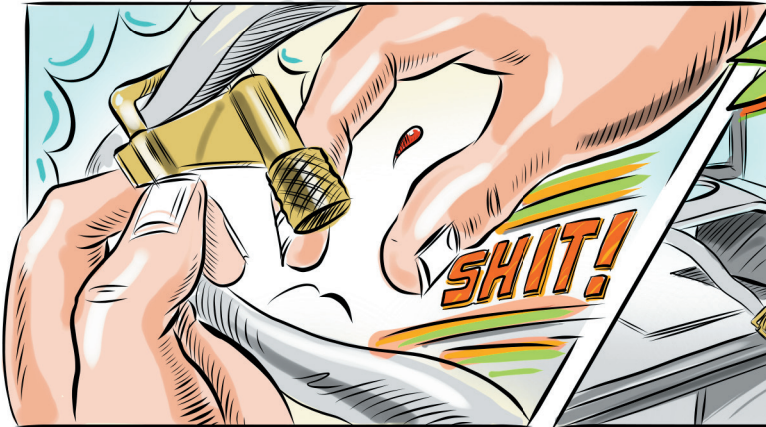
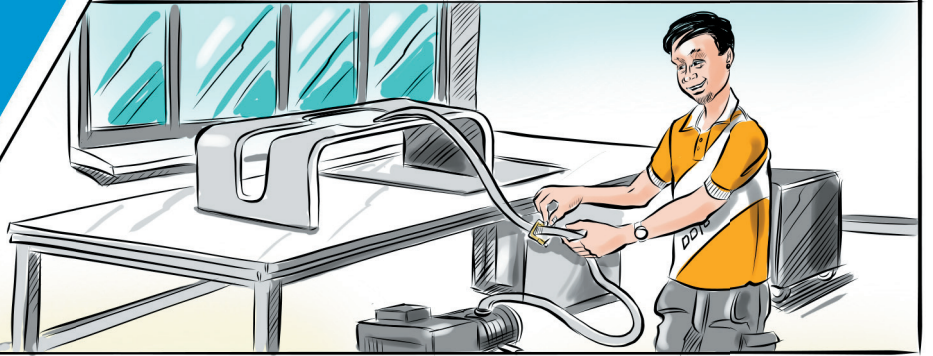
Minimum Ordered Quantity: 5 pc.

INFUSION MAN Nº 11

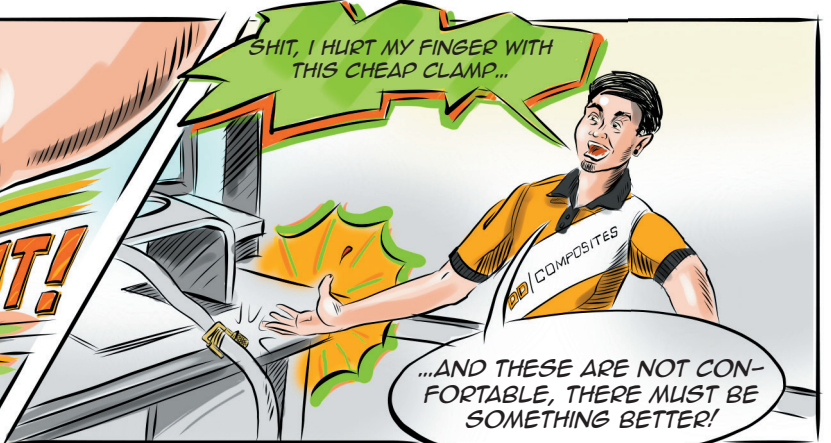
HOLD IT TIGHT!



LLEANDER PREPARES FOR AN INFUSION...



SHIT, I HURT MY FINGER WITH THIS CHEAP CLAMP...

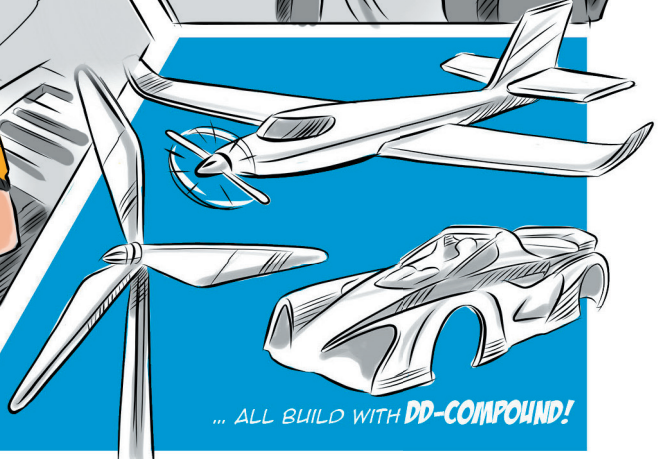
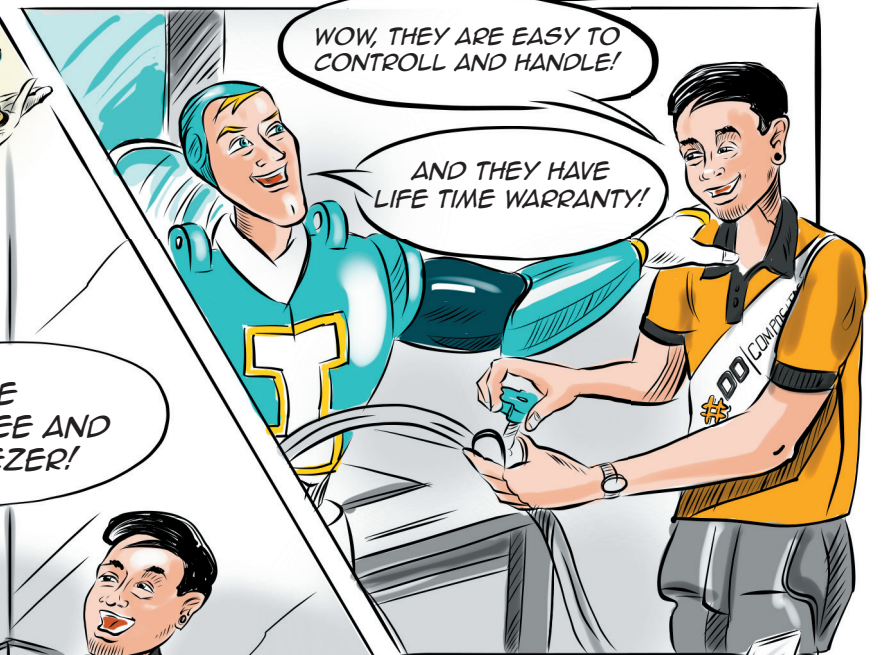


SQUEEZEE®
SQUEEZER®

USE
SQUEEZEE AND
SQUEEZER!

WOW, THEY ARE EASY TO
CONTROL AND HANDLE!

AND THEY HAVE
LIFE TIME WARRANTY!



... ALL BUILD WITH **DD-COMPOUND!**



22



The **MTI® valve** is used in the resin line and controls the resin infusion by means of pressure. During the infusion it represents for the resin infusion a counter-pressure to the under pressure in the part. If this counter-pressure is too big, the **MTI® valve** closes and the resin infusion stops. No more resin enters the part. The **MTI® valve** is adjusted that the counter-pressure becomes too great for the resin at precisely the point when the necessary vacuum in the part for the fibres to reach an optimum height to be covered in resin is achieved - that also achieving an optimum fibre volume ratio. Supervising the resin supply is not necessary any more, provided that enough resin exists. The **MTI® valve** provides for the steady infusion of the resin in the part.

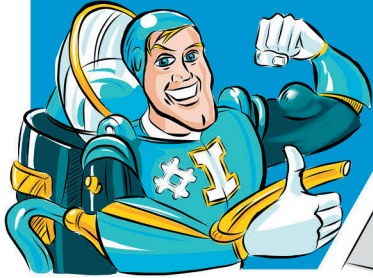
- Regulates itself the infusion of resin
- No resin pooling at inlet point
- The fibers are evenly covered with resin
- Optimum fibre volume ratio
- Highest quality of parts with reproducible results
- Vacuum infusion becomes easier
- Working hours and with it costs can be saved

MTI® valve

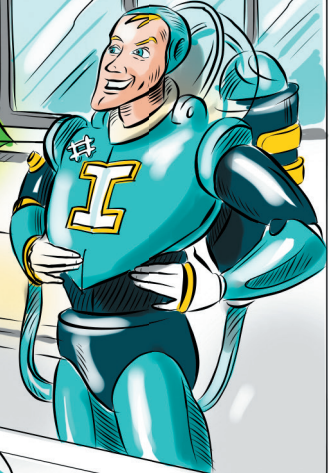
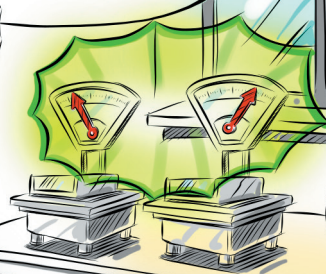
Item number: 10312101

Minimum Ordered Quantity: 10 pc.

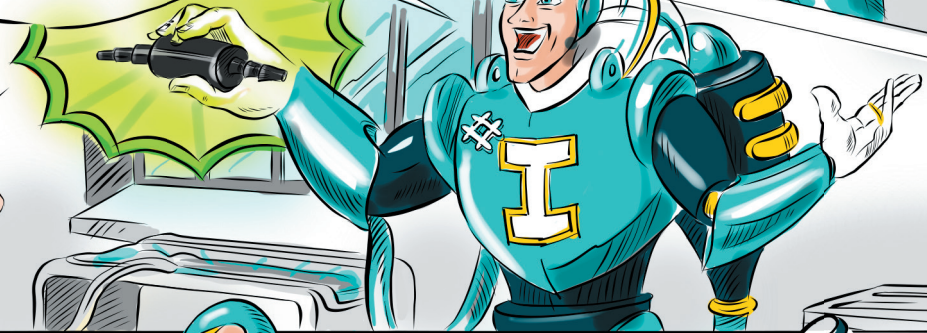
INFUSION MAN Nº 12
EVERYTHING UNDER CONTROL!



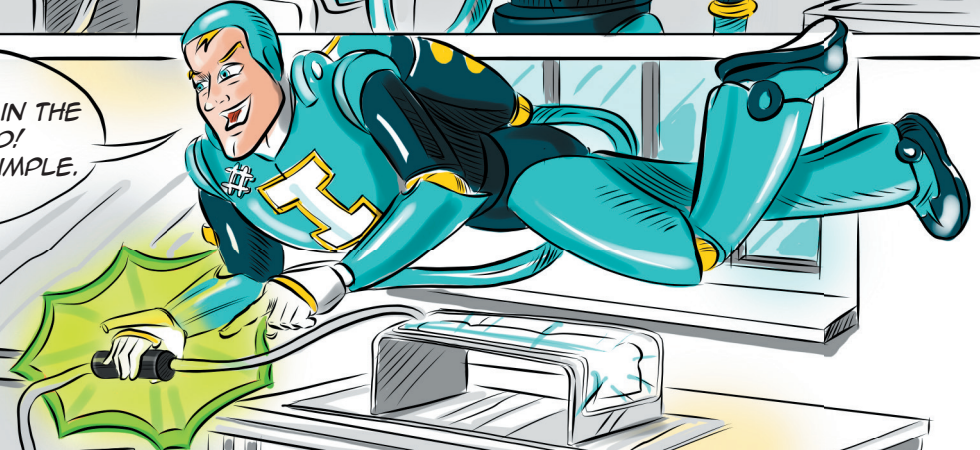
HEY INFUSION MAN!
HOW CAN WE GET
REPRODUCIBLE
VOLUME FRACTION?



YOU NEED
THE MTI VALVE!
IT CONTROLS THE
VOLUME FRACTION.

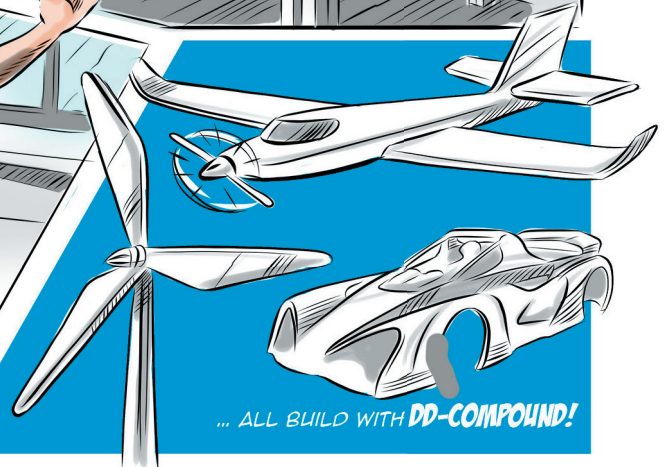
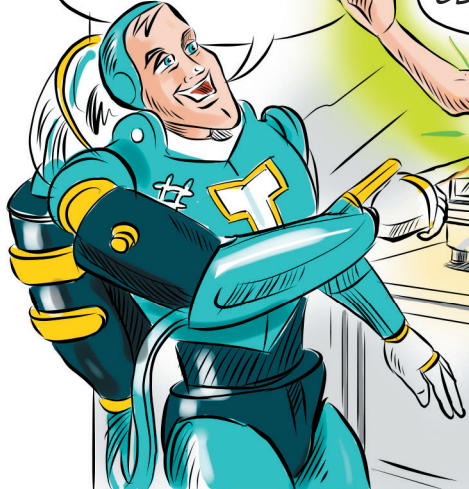
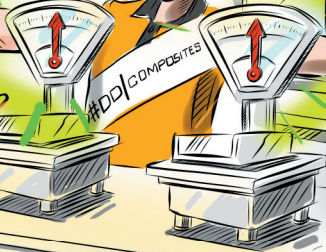


JUST PLACE IT IN THE
RESIN FEED!
THAT IS VERY SIMPLE.



SAME
VOLUME FRACTION
EVERY TIME!

GENIOUS!



... ALL BUILD WITH **DD-COMPOUND!**



24



The Sticky Can® is a spray adhesive developed by DD-Compound. It is used to fix dry fibres in the mould for infusion setups. It sprays very fine and can be used for visual carbon parts. The Sticky Can does it transparent and will be embedded in the matrix after infusion. The tack is strong but it is still repositionable.

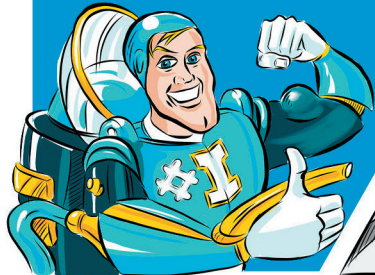
- High tack
- Small quantities needed
- Repositionable
- Transparent
- No impact on infusion

The Sticky Can

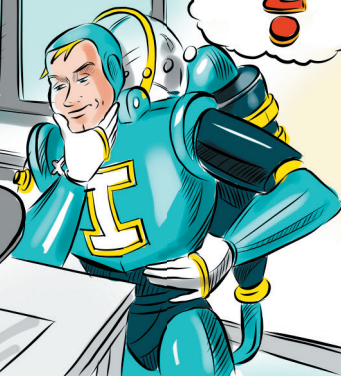
Item number: 11340373

Standard length: 24 pc. / 1 Box

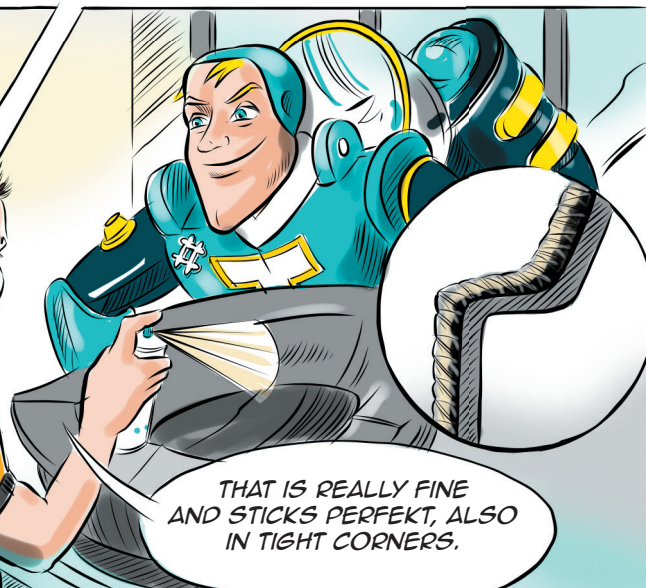
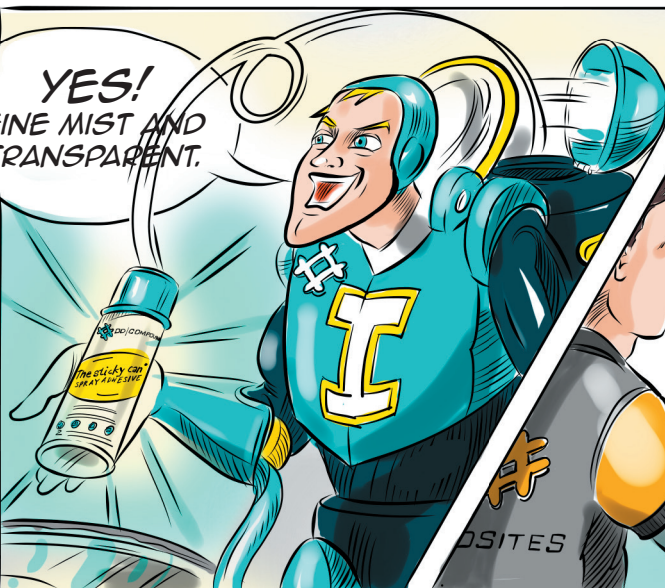
INFUSION MAN NO 13
THE PERFECT FIT



HI INFUSION MAN,
DO YOU HAVE A SPRAY
ADHESIVE THAT SPRAYS
NICE?

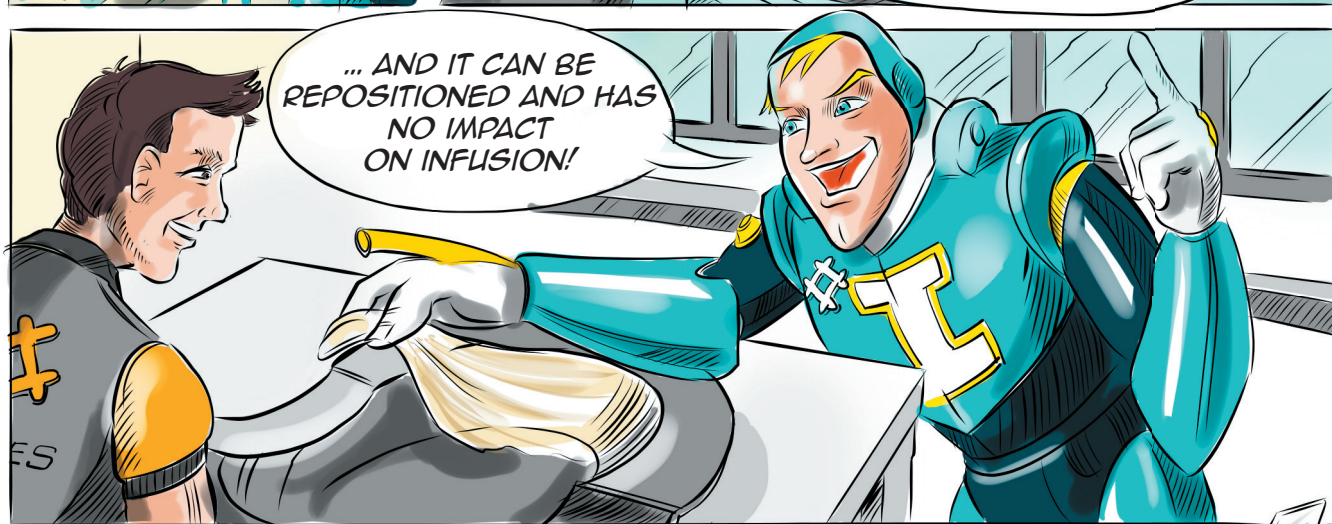


YES!
FINE MIST AND
TRANSPARENT.



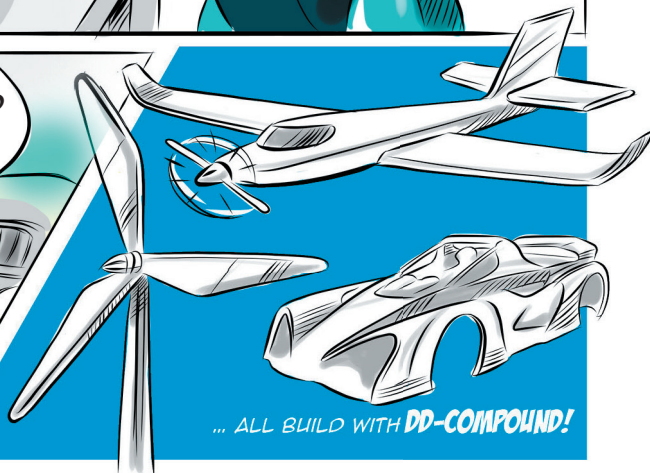
THAT IS REALLY FINE
AND STICKS PERFECT, ALSO
IN TIGHT CORNERS.

... AND IT CAN BE
REPOSITIONED AND HAS
NO IMPACT
ON INFUSION!

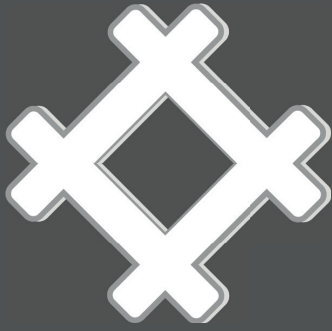


STEFAN PRESENTS THE FRESHLY MADE PART

IT HAS A HIGH YIELD
AND THE PART IS
PERFECT!



... ALL BUILD WITH **DD-COMPOUND!**



SERVICES

- technical know-how in using the MTI® process
- professional training for vacuum infusion (beginners and advanced)
- consulting in vacuum infusion processes (technical and economical)
- fault analysis
- conversion of production to vacuum infusion
- mold construction
- prototyping
- single piece production/ limited lot production



DD|COMPOUND

Lengericher Straße 8
49479 Ibbenbüren
Germany

fon: +40 (0)5451 50447-0
fax: +40 (0)5451 50447-10
info@dd-compound.com
www.dd-compound.com